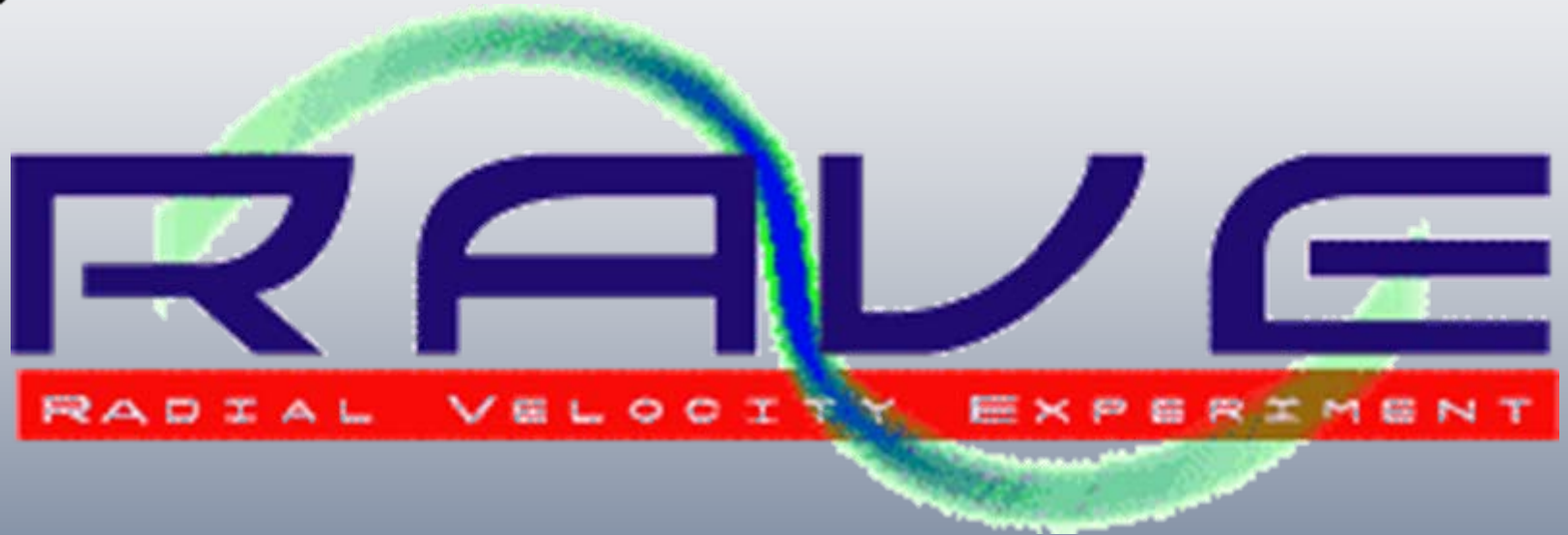




AIP



Matthias Steinmetz (AIP)



What do we need for Galactic Archeology?

- 6-d coordinates for millions of stars
 - ◆ positions on the sky (α, δ) → catalogues
 - ◆ distances → parallaxes
 - astrometry from space (GAIA)
 - ◆ proper motions on celestial sphere
 - astrometry from space or 130yr baselines
 - ◆ radial velocities
 - spectra; fringe benefit: abundance
- How to analyze these data sets?
- What can we learn from 5-d or 4-d projections ?



AIP

4D → 5D, 5D → 6D

- Astrometric mission: (parallaxes)/proper motions
 - ◆ Hipparcos: 118 000 stars
 - ◆ Tycho-2: 1 million stars
- Radial velocities since 1888-2003:
 - ◆ For MW: only ~40000
 - ◆ For M31: ~10000
 - ◆ Galaxies: few Million



The Milky Way is all around us!



AIP

Construction and Evolution of the Galaxy

Feb 27
2009



Radial velocity surveys

- Geneva-Copenhagen
 - ◆ ~20000 stars (Hipparcos)
- SDSS
 - ◆ spectra for 500000 stars
- RAVE
 - ◆ 10^6 stars all sky to $l=13$ by 2011; 350k spectra in early 2009; v_r , Z
- Hermes (2011-)
- GAIA (2012 -)



AIP



Survey Description

The **RAVE** survey

RADIAL VELOCITY EXPERIMENT

- Spectroscopic high latitude survey of the MW
 - ◆ $9 < l < 13$
- GAIA spectral range and resolution
 - ◆ Ca triplet region (8400-8800Å)
 - ◆ $R_{\text{eff}}=7500$
- Scheduled operation: 2003 – 2011
 - ◆ 6dF MOS on UKST at Siding Spring
 - ◆ 7 nights per lunation up to 8/2005
 - ◆ >20 nights per lunation since 8/2005
- Goal: 1 Million spectra
- Public data releases



AIP

RAVE and SEGUE are complimentary

SEGUE

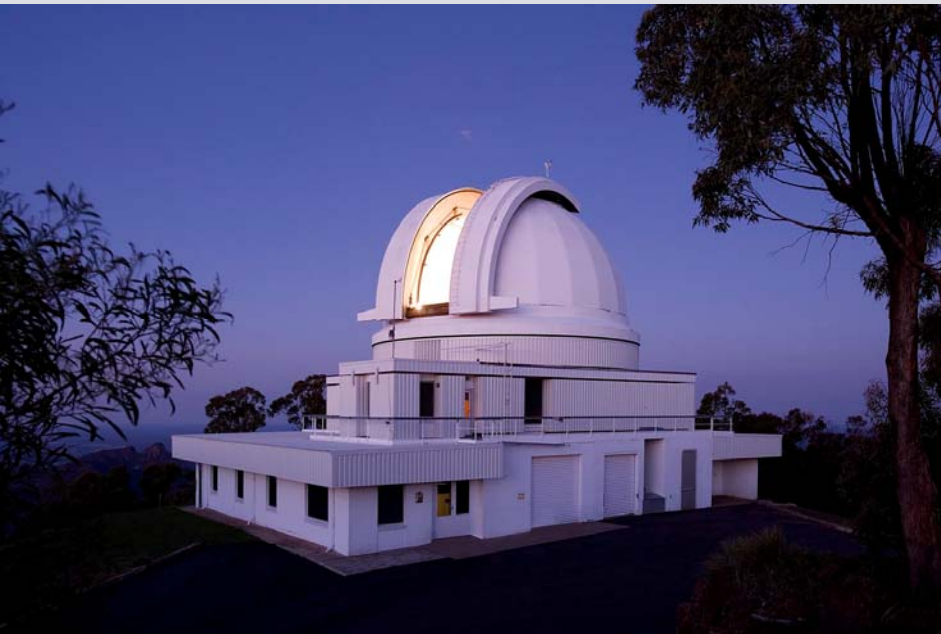
- selected pointings
- deep exposures
- low resolution
($R=2000$)
- large wavelength coverage
- northern hemisphere

RAVE

- wide angular coverage
- intermediate depth
- intermediate resolution
($R=7500$)
- limited wavelength coverage
- southern hemisphere



AAO UK Schmidt Telescope





6dF Multi Object Spectrograph





AIP

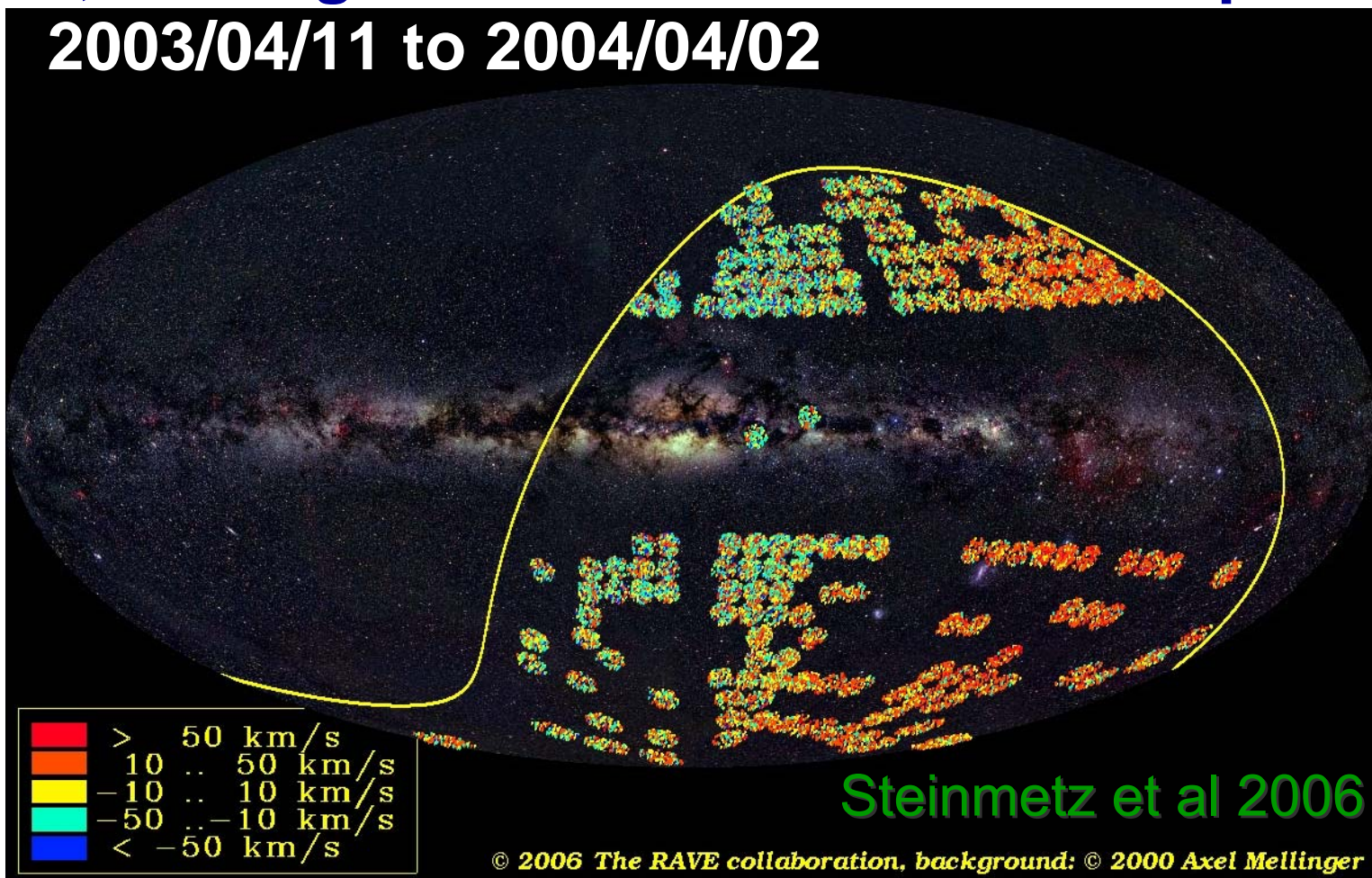
1st Data Release



**Coverage : ~4,670 sq.deg
25,274 radial velocities
24,748 targets**

**240 fields
5.7° diameter
1 hour exposures**

2003/04/11 to 2004/04/02



Steinmetz et al 2006

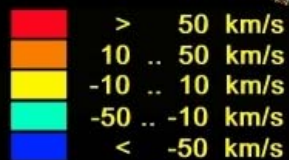
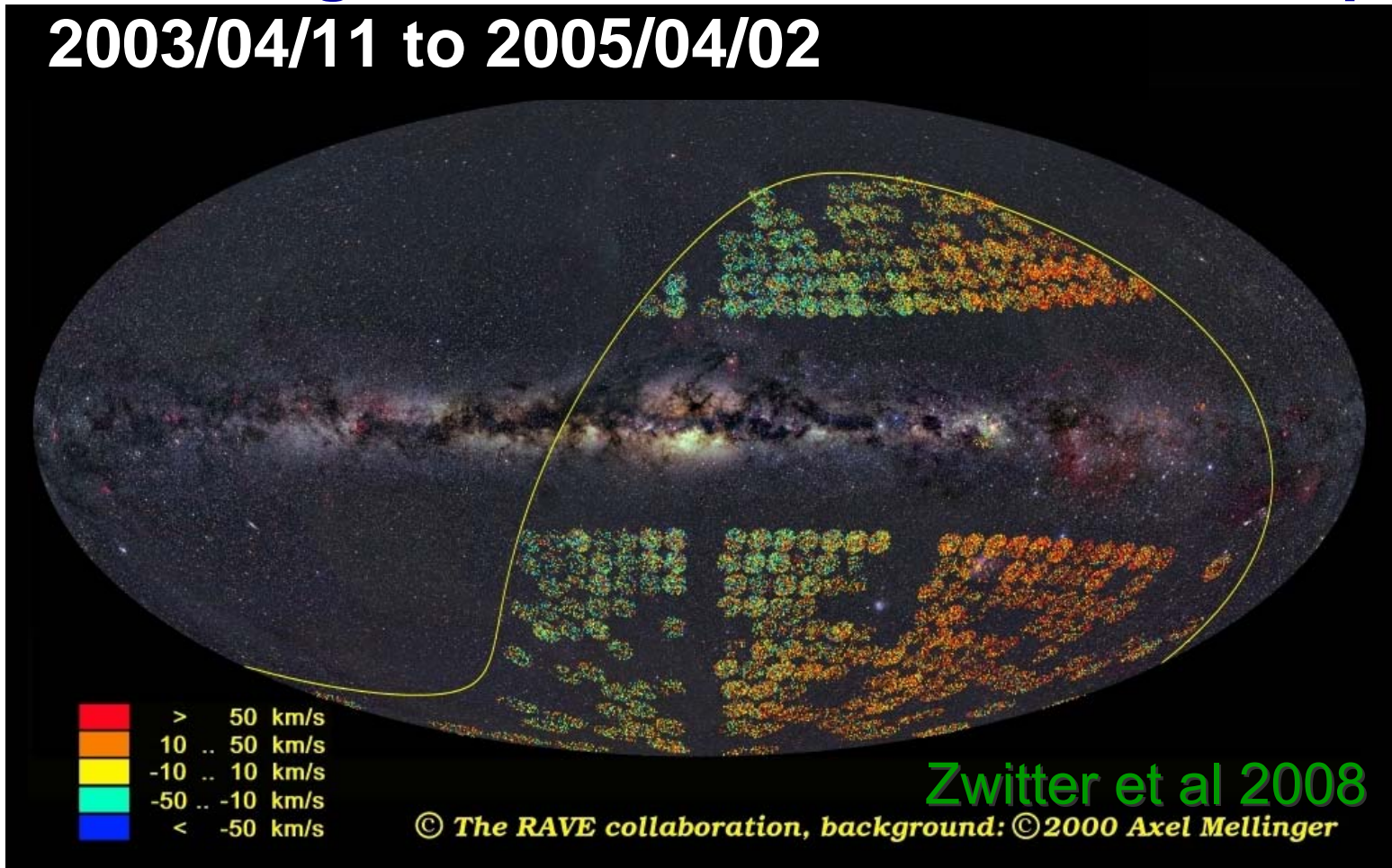
2nd Data Release



Coverage : ~6800 sq.deg
51,829 radial velocities
49,327 targets

500 fields
5.7° diameter
22407 stellar par.

2003/04/11 to 2005/04/02



Zwitter et al 2008

© The RAVE collaboration, background: ©2000 Axel Mellinger

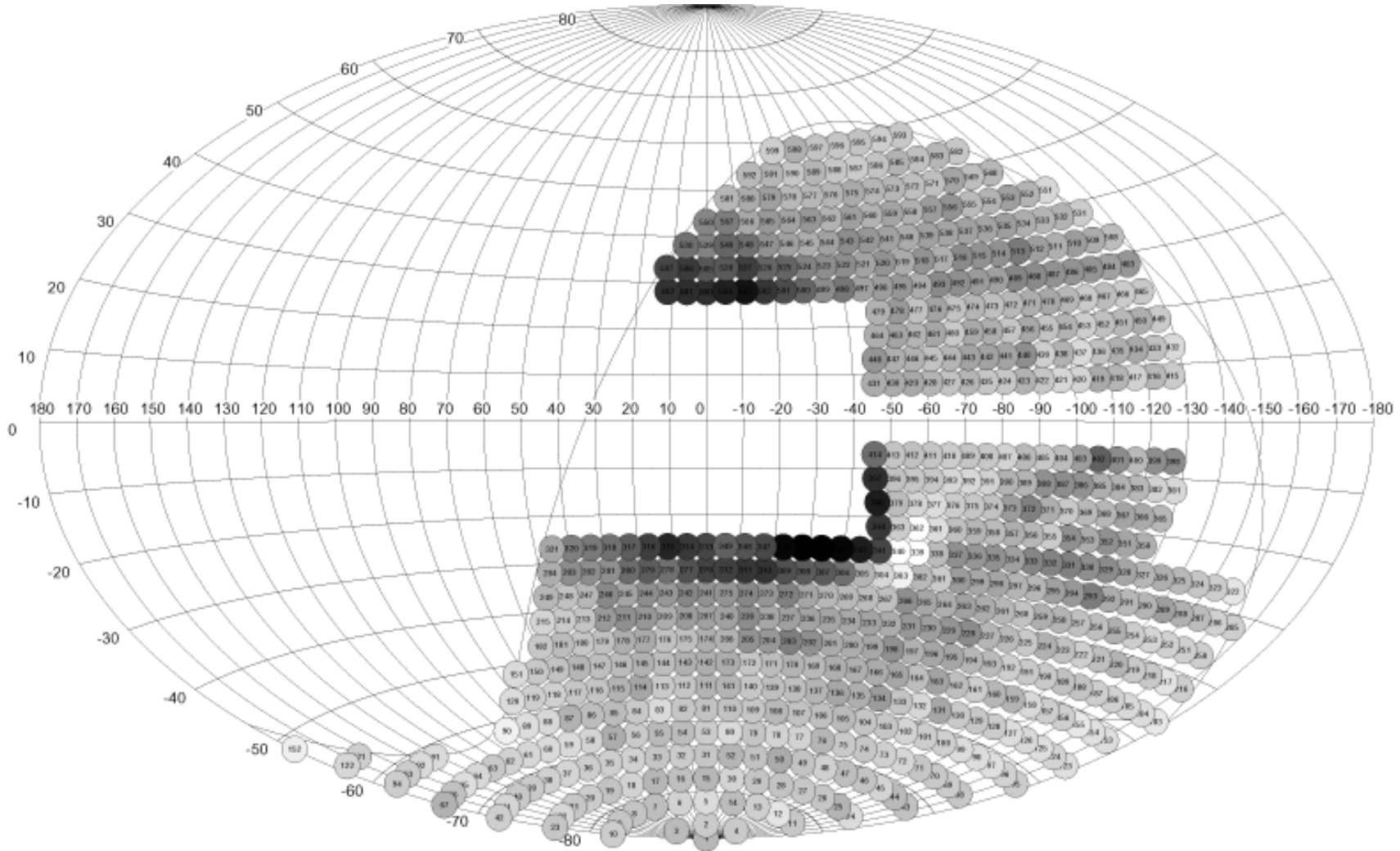


RAVE's progress



Construction and Evolution of the Galaxy

Feb 27
2009

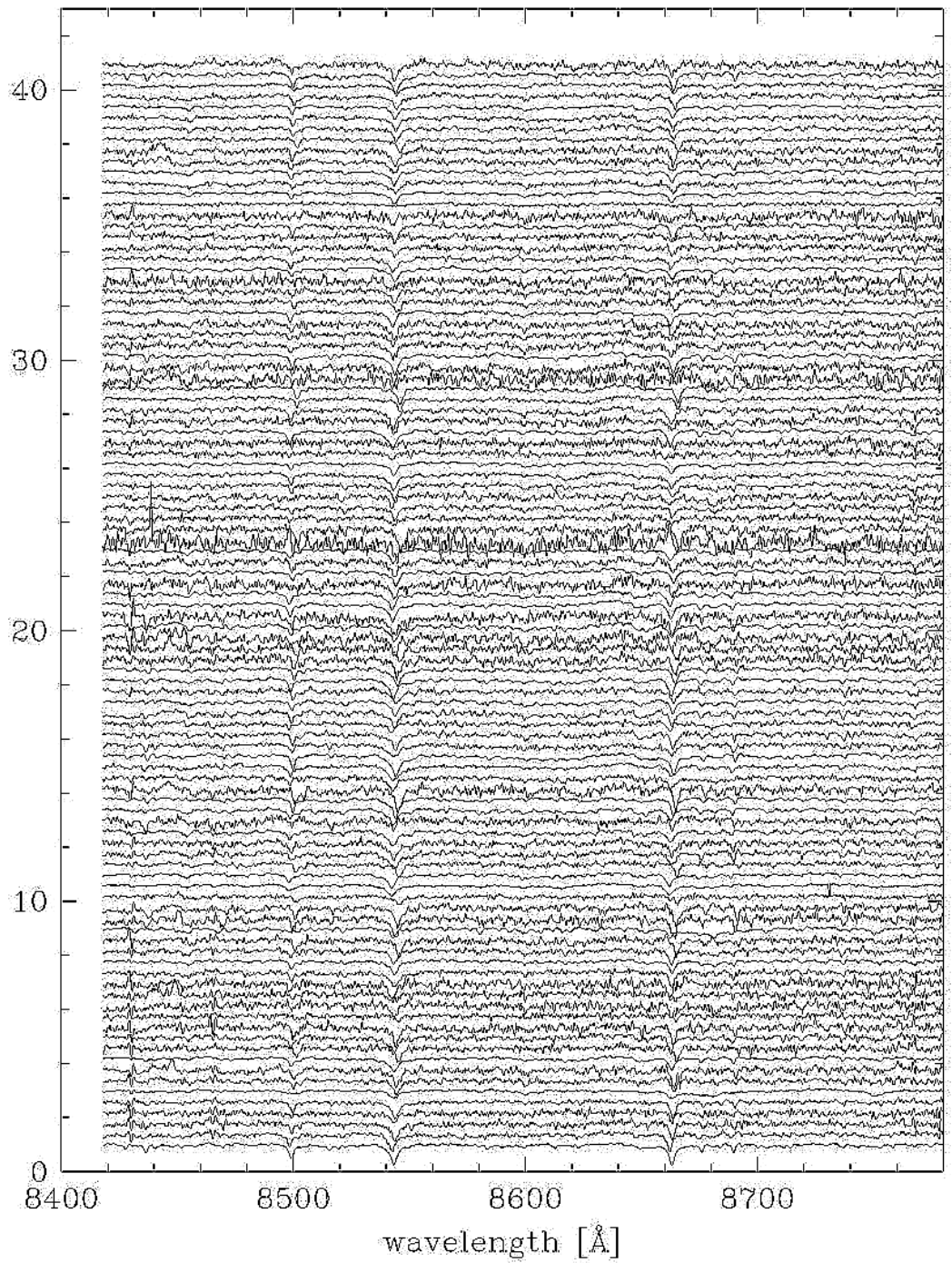


02/27/2008 : 350,000 spectra for 300,000 stars



AIP

Feb 27 Construction and Evolution of the Galaxy 2009



- 150
- 149
- 148
- 147
- 146
- 144
- 143
- 142
- 141
- 140
- 138
- 136
- 137
- 135
- 134
- 133
- 132
- 131
- 129
- 128
- 127
- 125
- 123
- 121
- 120
- 119
- 118
- 117
- 116
- 114
- 113
- 112
- 110
- 107
- 104
- 103
- 102
- 100
- 099
- 098
- 097
- 092
- 091
- 090
- 087
- 086
- 085
- 084
- 083
- 082
- 080
- 079
- 078
- 077
- 075
- 074
- 073
- 072
- 070
- 069
- 067
- 066
- 065
- 064
- 062
- 061
- 060
- 057
- 055
- 054
- 053
- 052
- 049
- 045
- 042
- 041
- 039
- 036
- 034
- 033
- 032
- 029
- 028
- 025
- 024
- 022
- 021
- 019
- 017
- 015
- 013
- 012
- 011
- 010
- 009
- 008
- 007
- 006
- 004
- 001

Repeats and Standards

- RAVEselect builds in a ~10% repeat rate

No. of times observed	No. of stars in database
1	215,511
2	24,796
3	3129
4	389
5	68
6	101
7	33



AIP



Data Product

Some numbers

■ DR1

- ◆ 25,274 RVs
- ◆ 24,748 individual objects
- ◆ no parameters

■ DR2

- ◆ 51,829 RVs (+26,555)
- ◆ 49,327 individual objects (+24,579)
- ◆ 22,407 parameters for 21,121 unique objects

■ DR3

- ◆ 87,612 RVs (+35,783)
- ◆ 78,903 individual objects (+29,576)
- ◆ 55,290 parameters for 51,984 unique objects
(+33,883) (+30,863)

DR2 Internal errors:

DR1

Mean : 2.3km/s

Median : 1.9km/s

Peak : 1.7km/s

DR2-DR1

Mean : 2.2km/s

Median : 1.5km/s

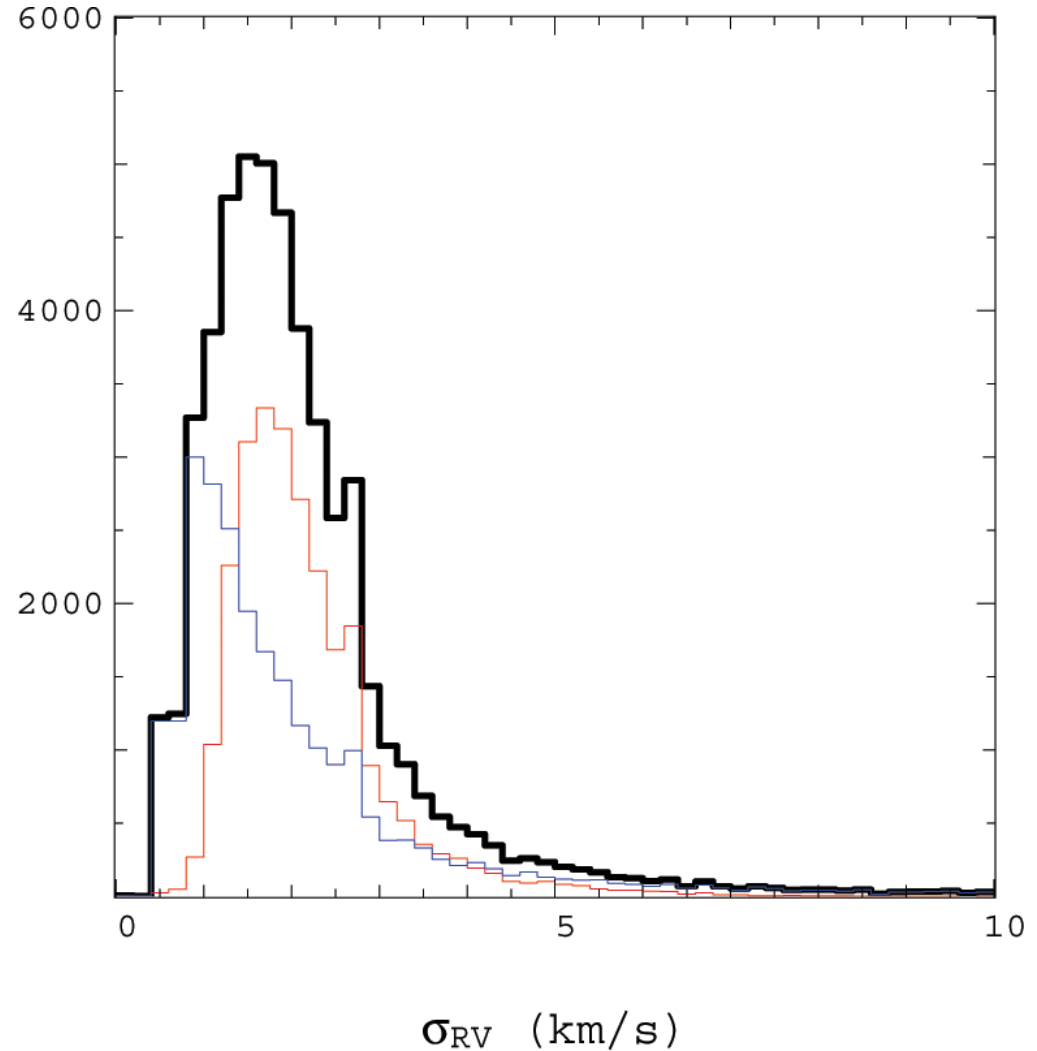
Peak : 0.9km/s

DR2

Mean : 2.2km/s

Median : 1.8km/s

Peak : 1.5km/s



Zwitter et al., 2008



AIP



AIP

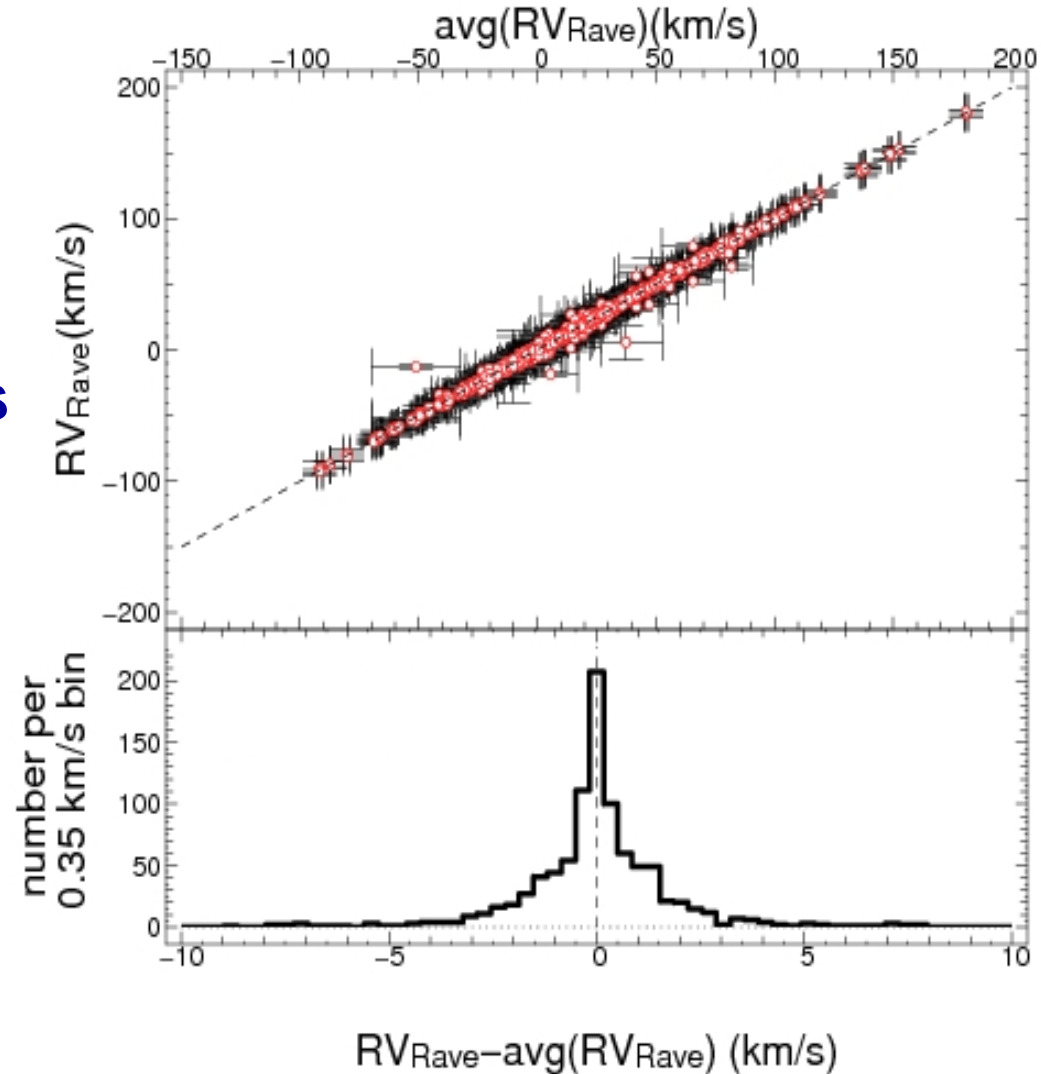
Stability of Radial Velocities



Based on 840 re-observed targets:

mean diff=-0.02 km/s
rms=2.83 km/s

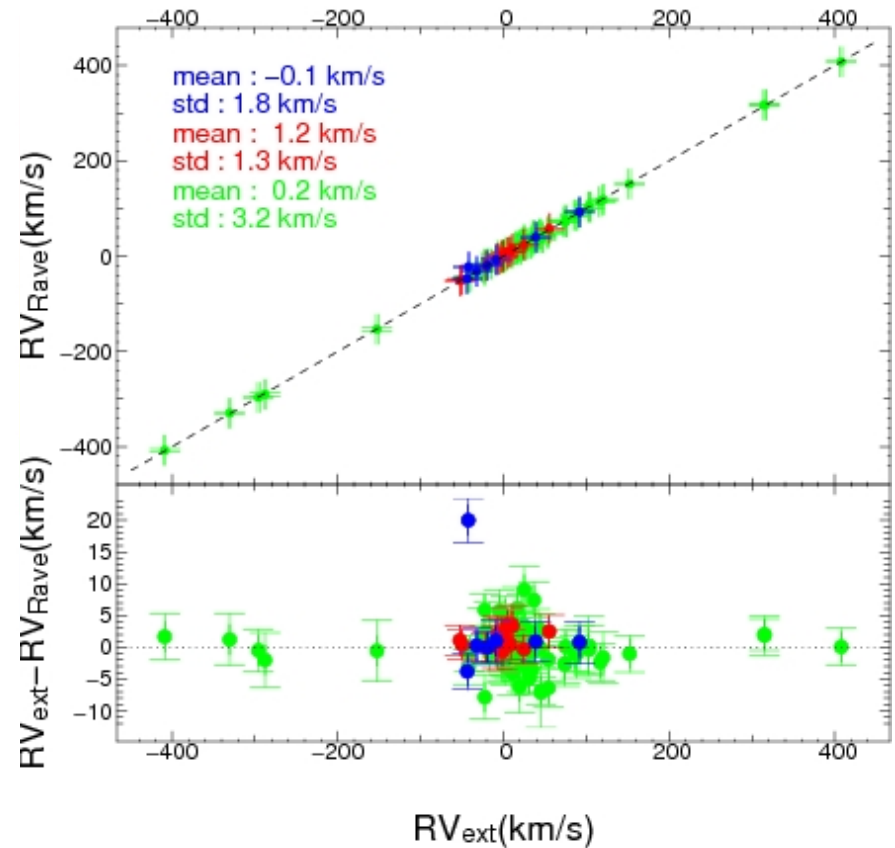
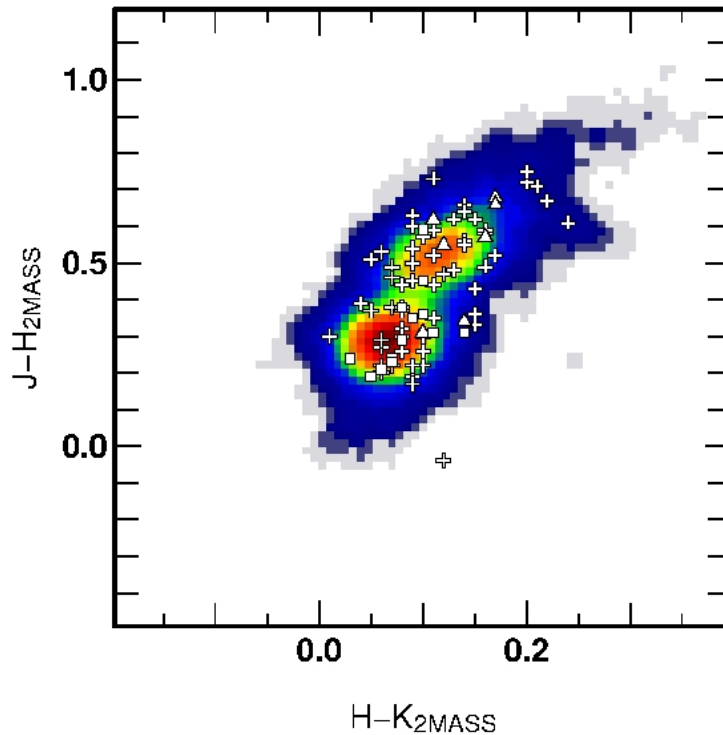
Good stability of solution with time



Steinmetz et al., 2006

Comparison to “Standards”

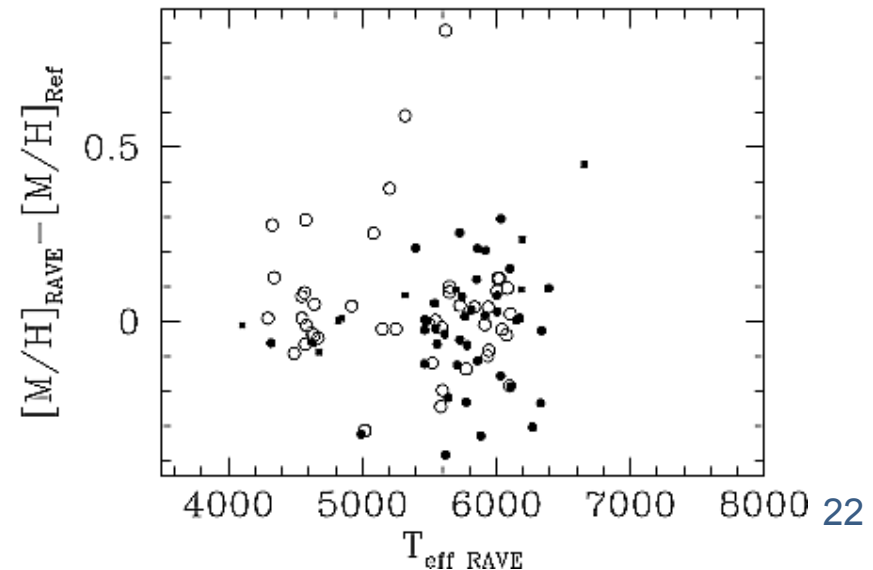
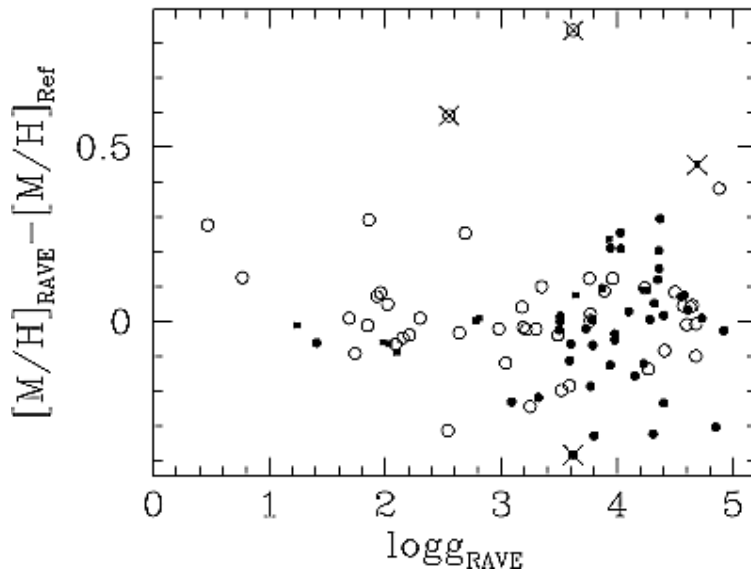
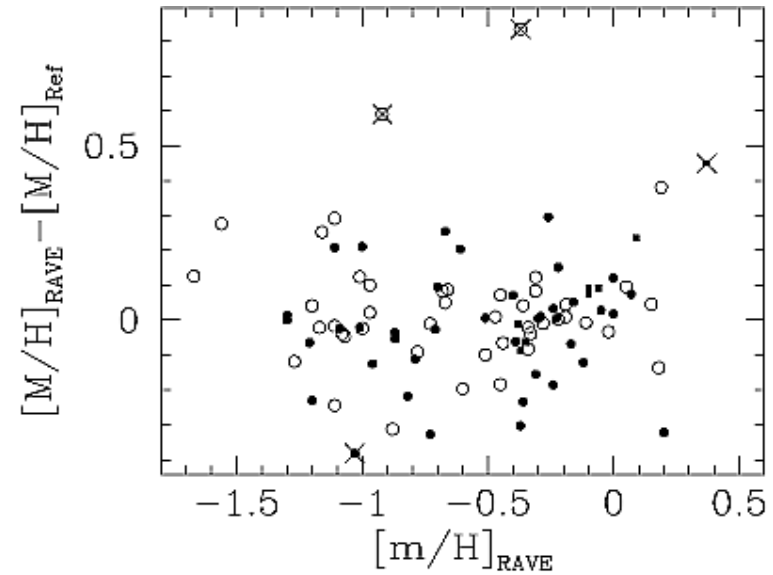
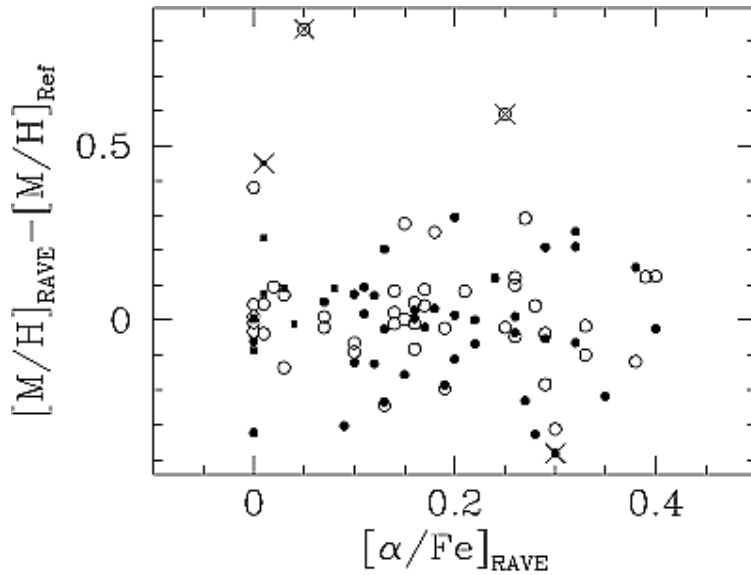
- 3 external sources:
- Elodie (high resolution)
 - 2.3m (long slit, medium resolution)
 - Geneva-Copenhagen (CORAVEL)



Steinmetz et al., 2006

Metallicity by template fitting (DR2)

Zwitter et al., 2008



Survey Design



Besides the CaII triplet:

Calcium triplet region contains a wealth of chemical information (need for good resolution to measure some of those lines)

Also gravity and metallicity tracers

	K0 III	A7 IV
HI		5
Cl	1	1
NI		11
MgI	11	7
Sil	23	14
SI	5	14
Cal	2	
CaII	3	3
Til	18	
CrI	7	
MnI	7	
Fel	60	19
FelI		3
Col	3	
Nil	4	

Abundances

RAVE spectral range contains information on various chemical elements

BUT

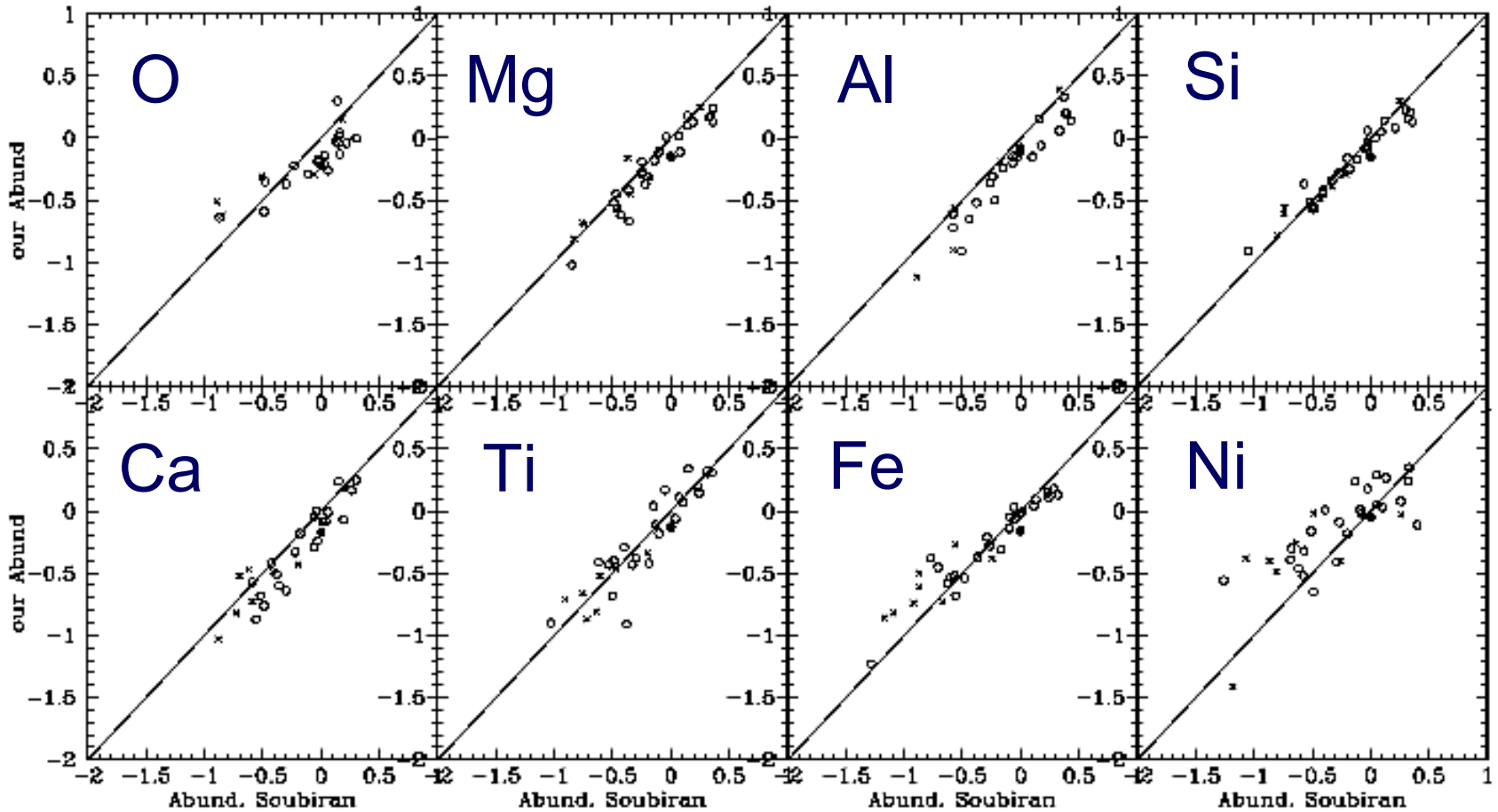
- low signal to noise (SNR~20)
- low spectral resolution (R~7500)

⇒ Need for an efficient algorithm to deblend lines

Elements we can measure:

O, Mg, Al, Si, S, Ca, Ti, Cr, Fe, Co, Ni, Zr

Abundances



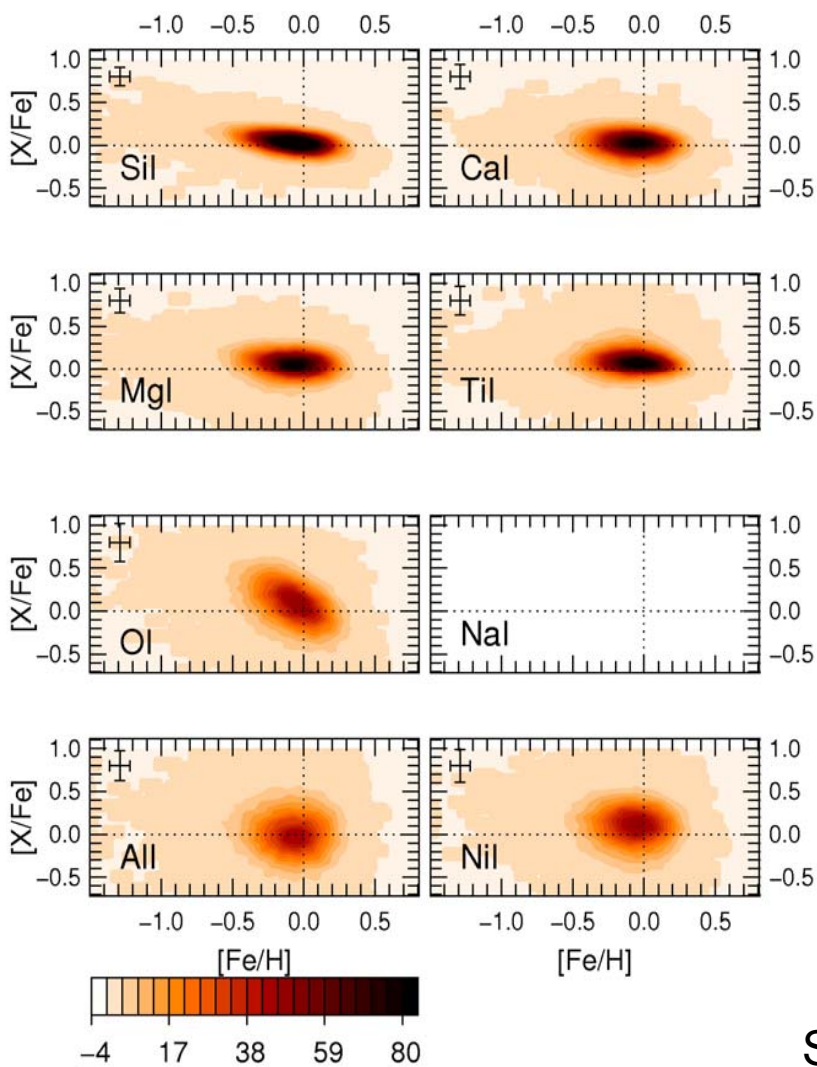
Asplund et al. (2005) solar abundances

- spectra with $S/N \geq 100$
- × spectra with $S/N < 100$
- Moon spectrum

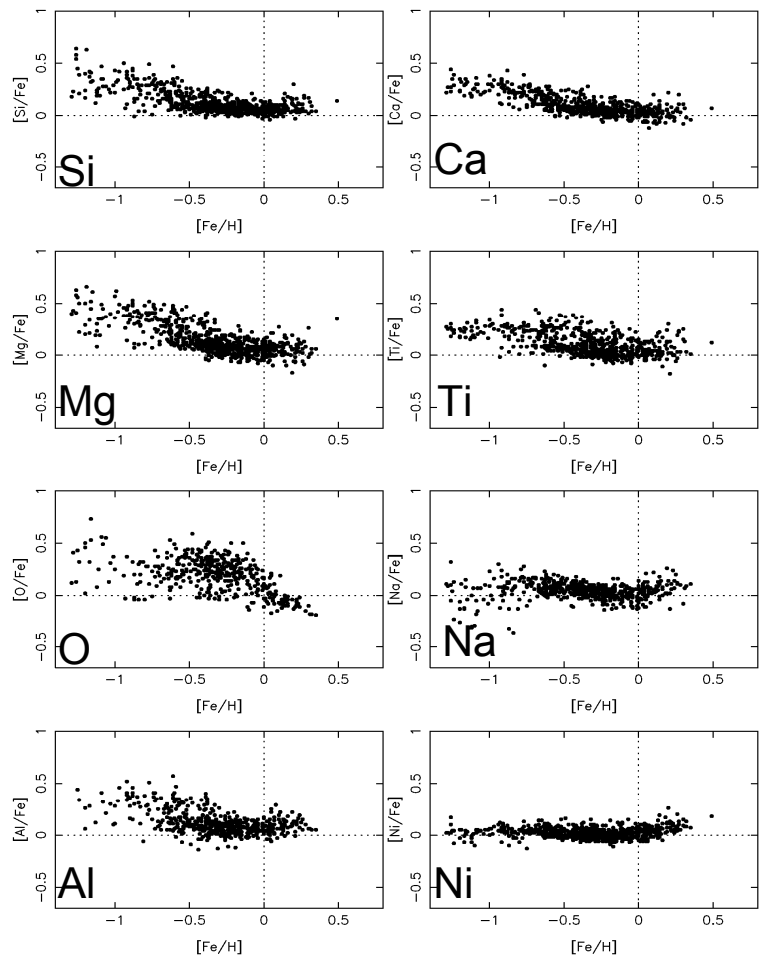
Comparison to Soubiran & Girard

abundances: comparison with literature data (Boeche et al 08)

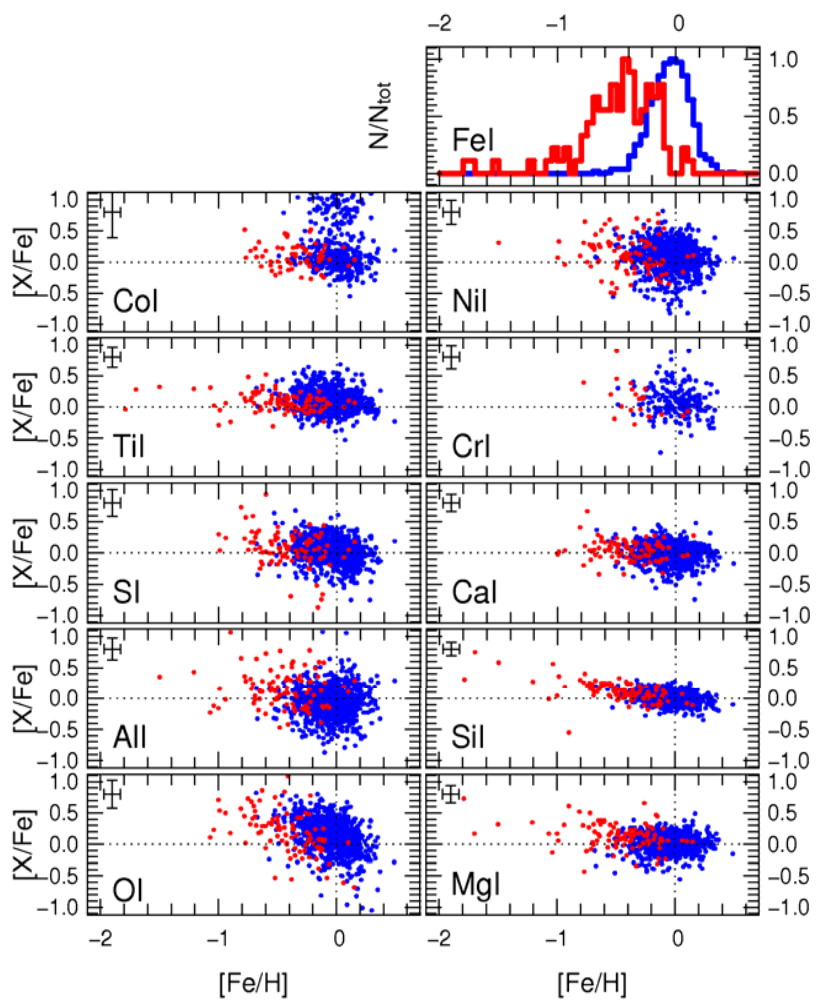
32841 RAVE stars



743 stars by Soubiran & Girard



abundances: thin and thick disk stars (Boeche et al 08)



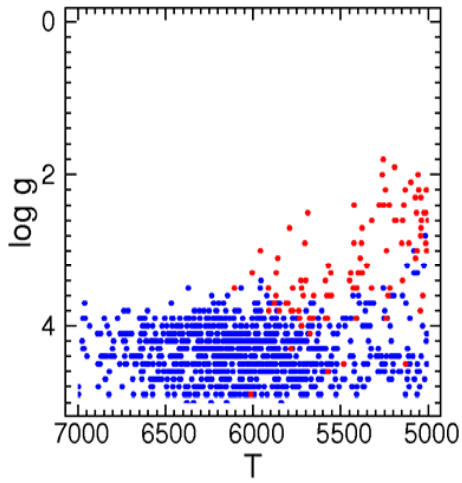
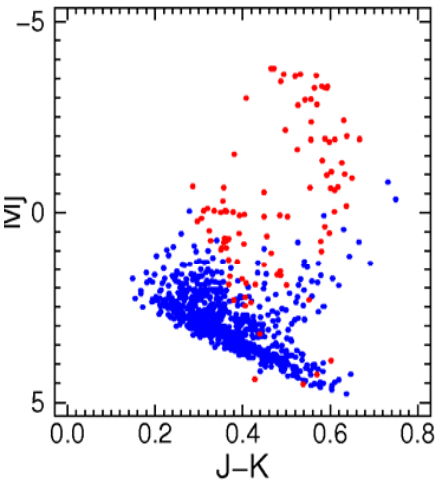
out of 4421 stars, we select:

908 thin disk stars

97 thick disk stars

abs(V)<20 km/sec,
abs(W)<16 km/sec,
abs(zGal)<0.3 Kpc

V<-100 km/sec,
abs(W)>50 km/sec,

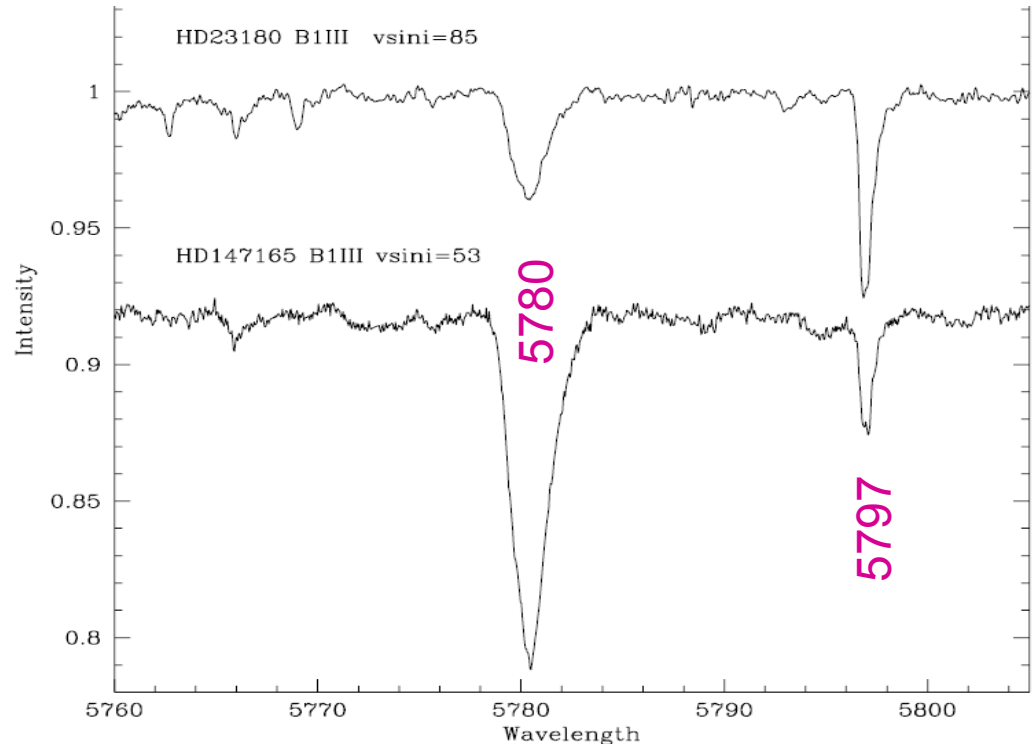
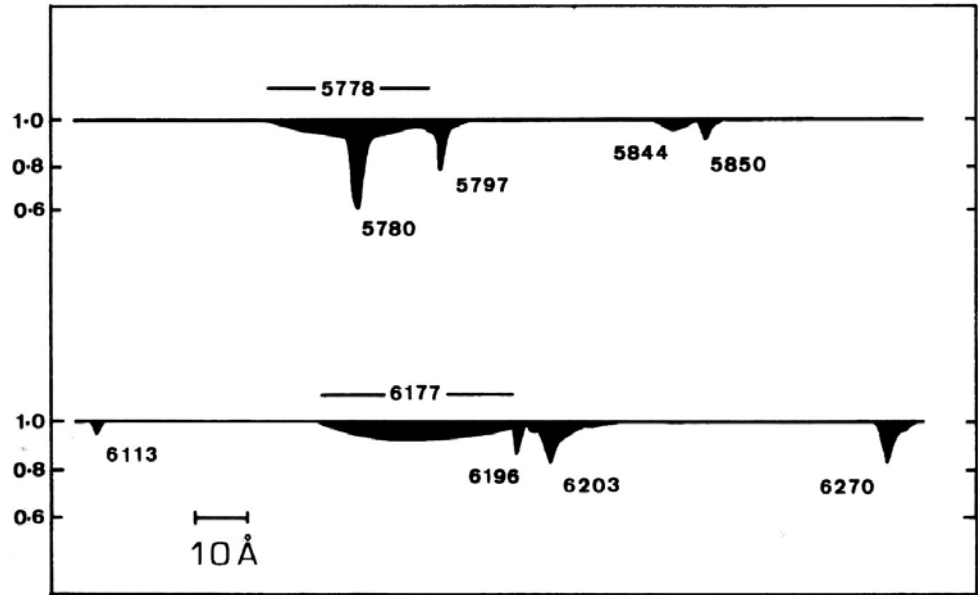


discovered in 1922 as stationary lines in spectra of eclipsing binaries

≥200 DIBs known over the optical range

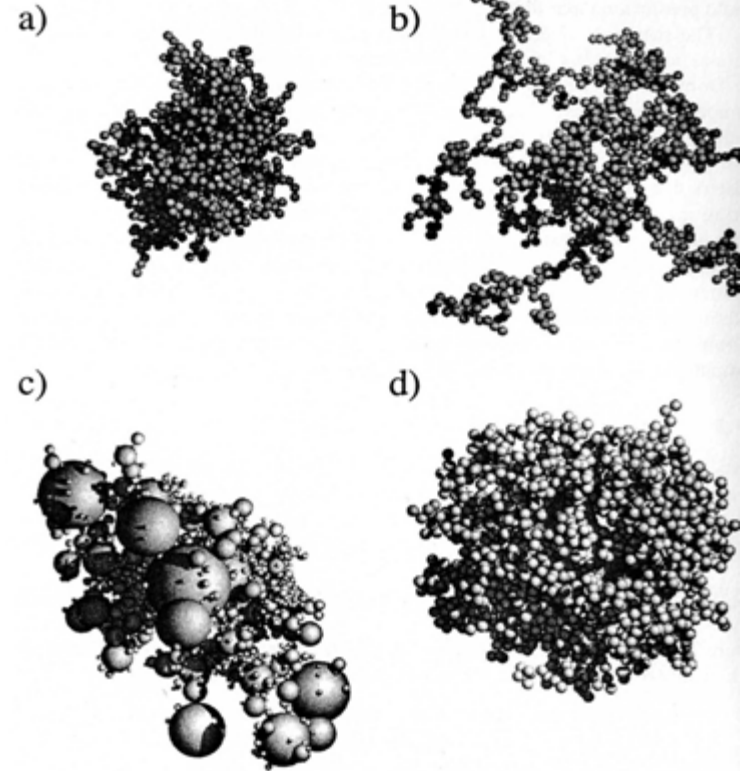
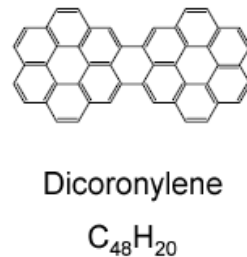
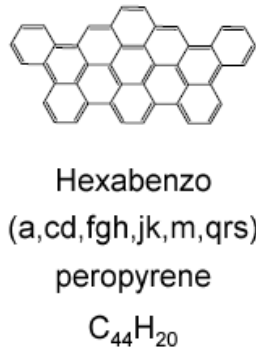
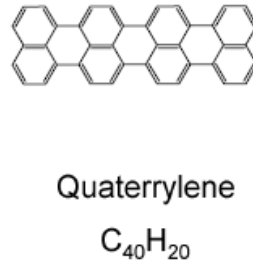
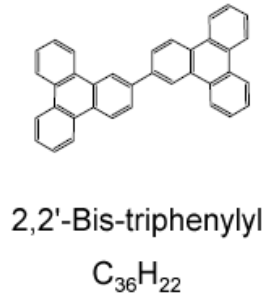
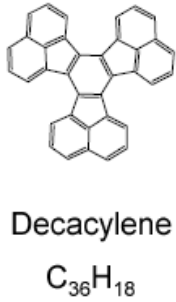
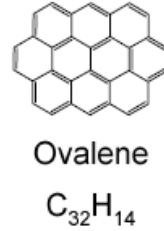
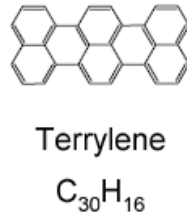
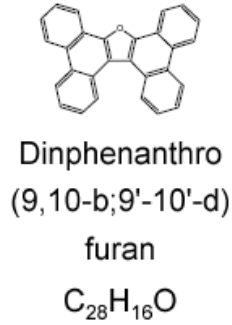
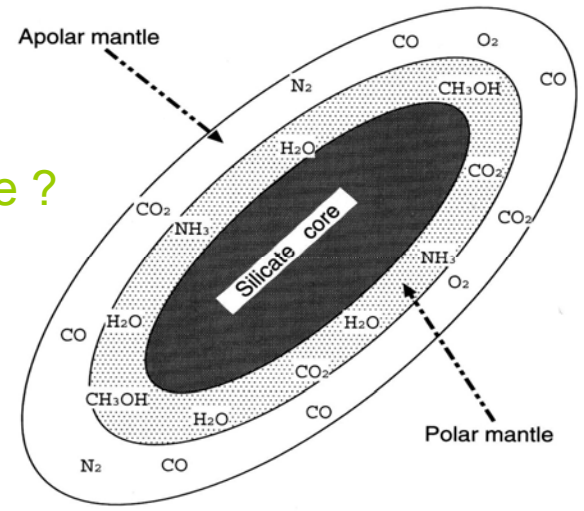
large differences in shapes

and in relative intensity



86 years after discovery, the carriers of DIBS are still unknown: the longest living mystery of astronomical spectroscopy

do they originate in the solid or gaseous ISM phase ?



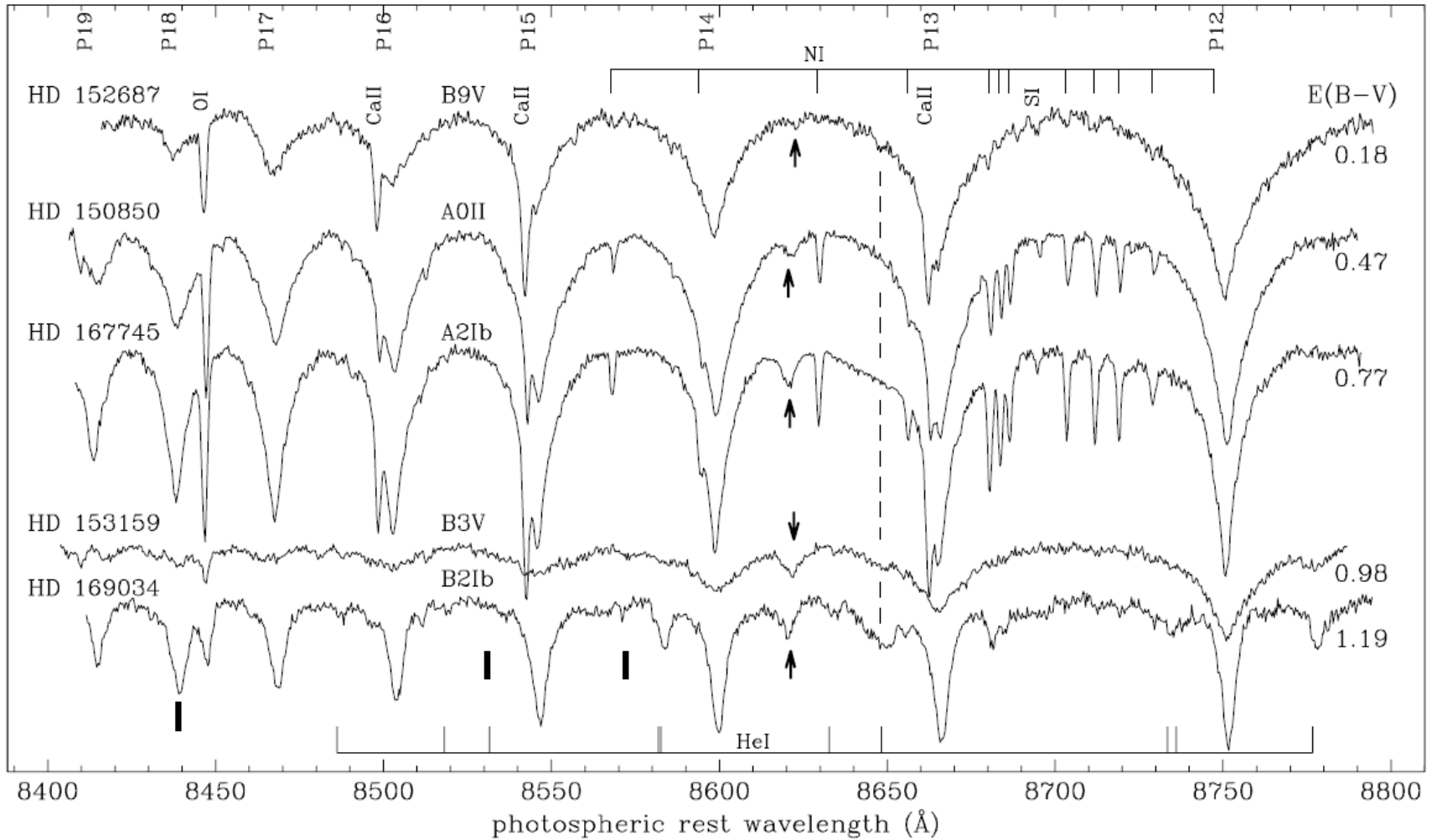
Extinction measurement with DIBs



AIP

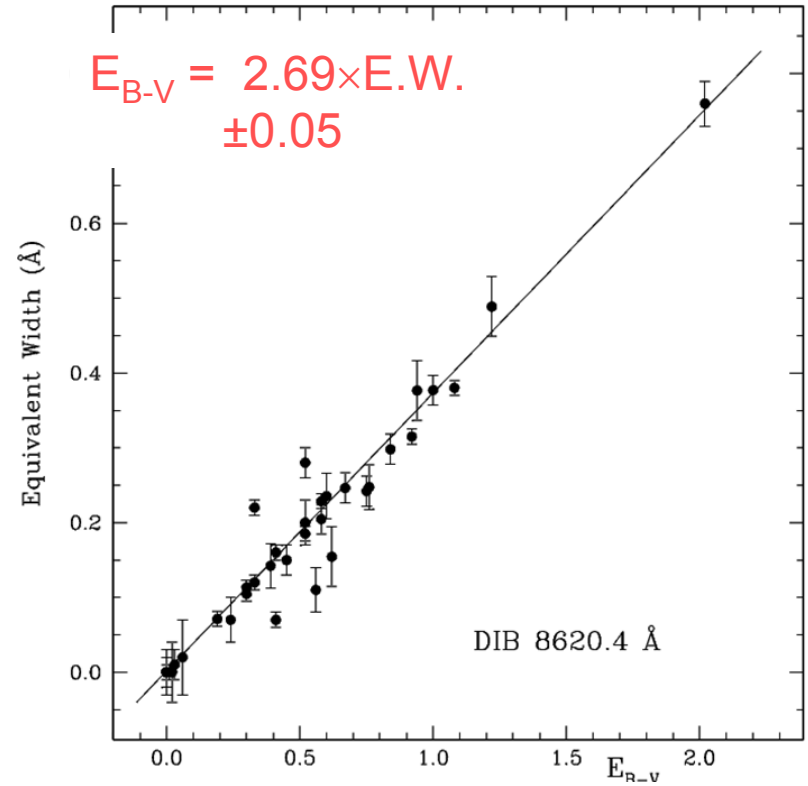
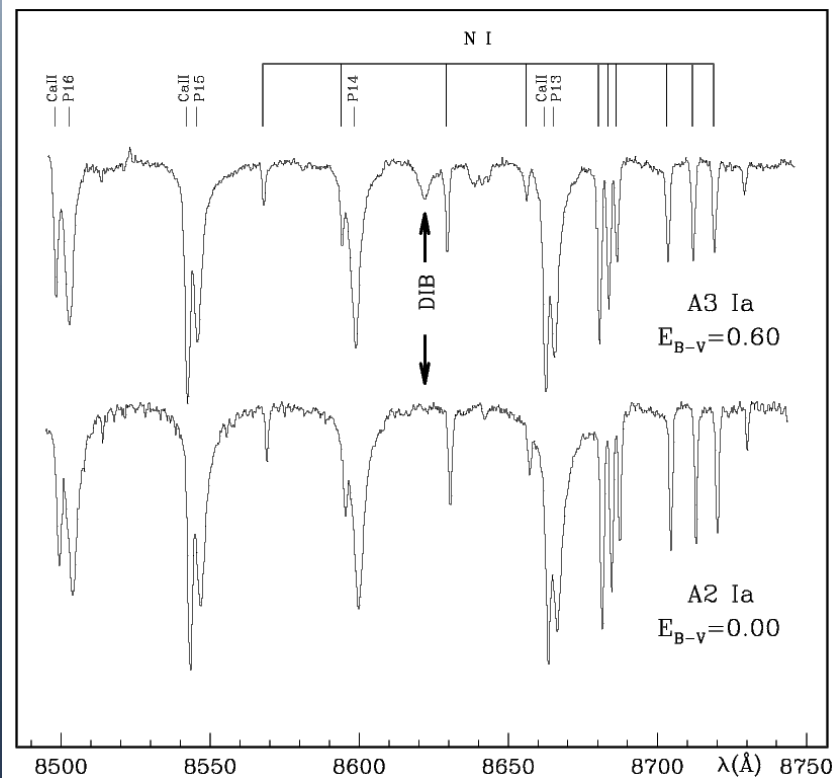
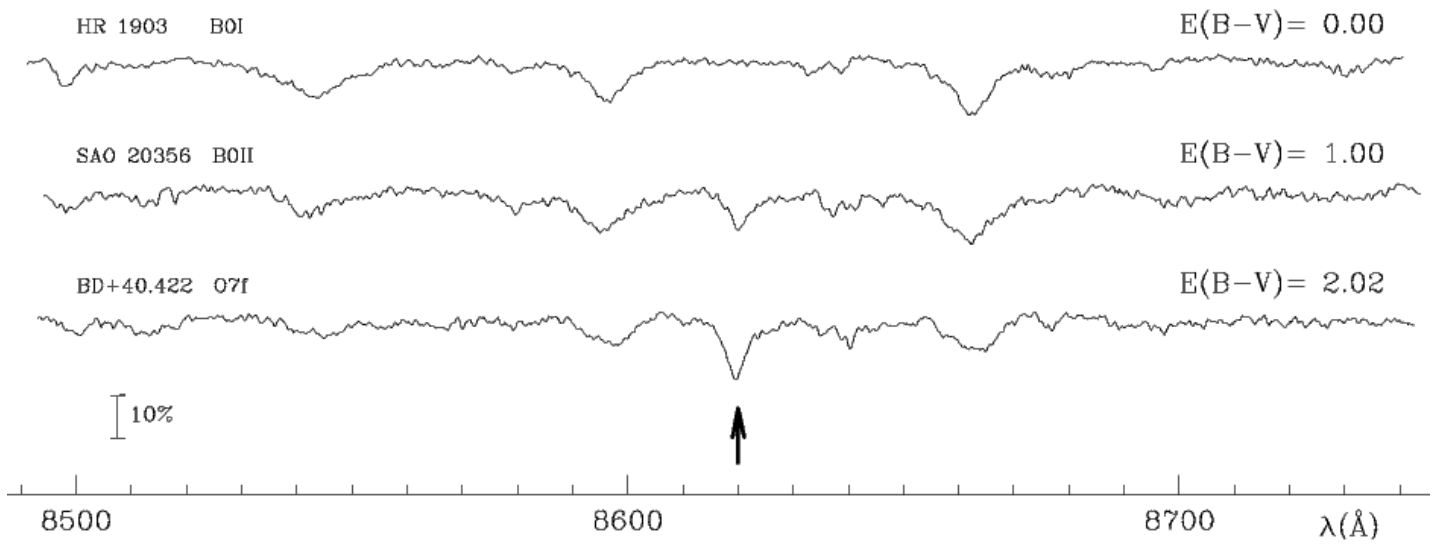
Construction and Evolution of the Galaxy

Feb 27
2009

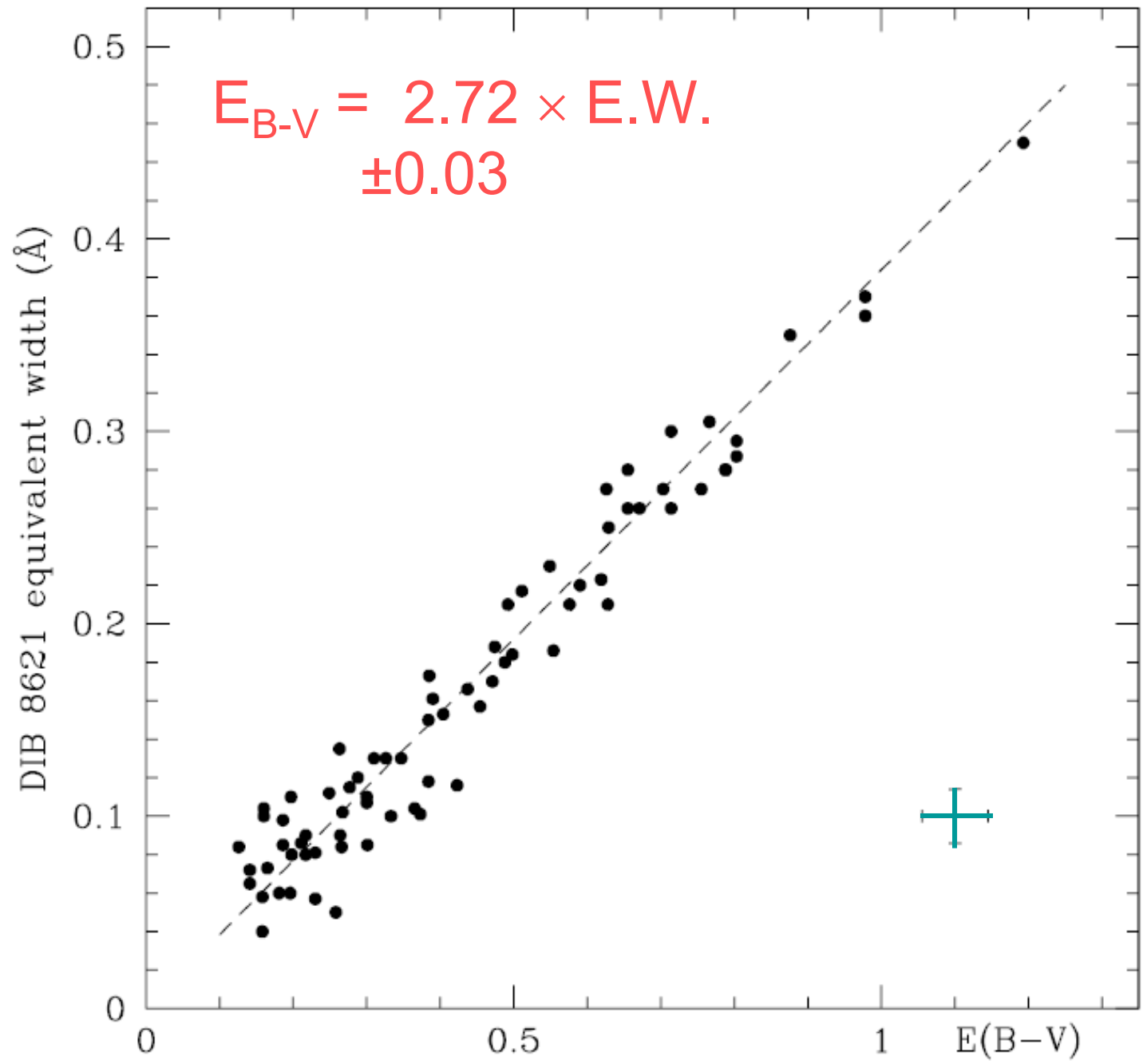




AIP



Munari (2000)

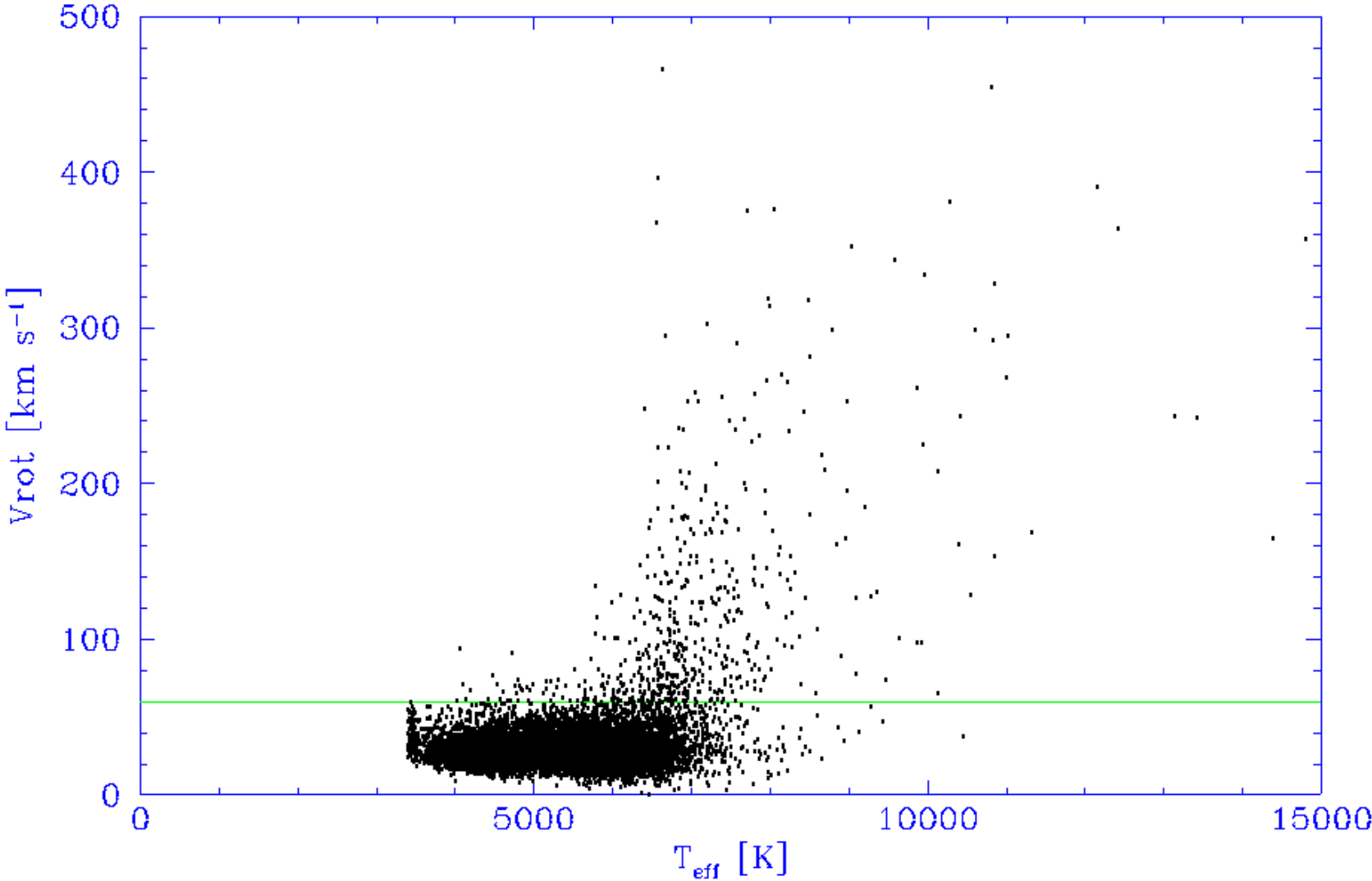




AIP

Fast Rotators: 547 stars in DR2

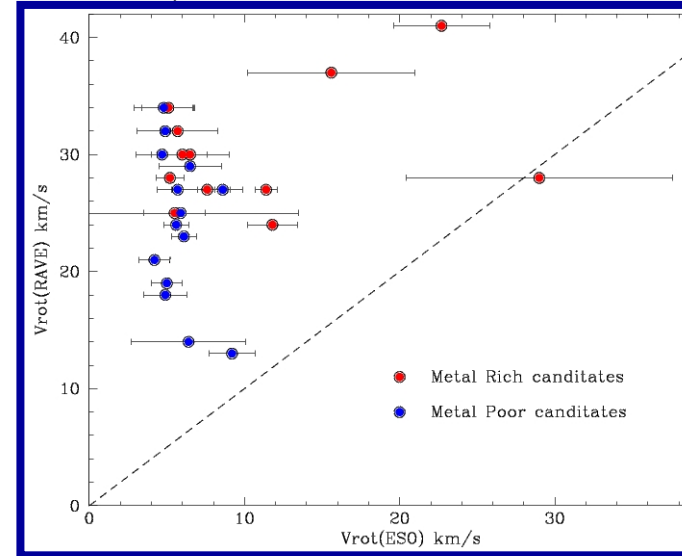
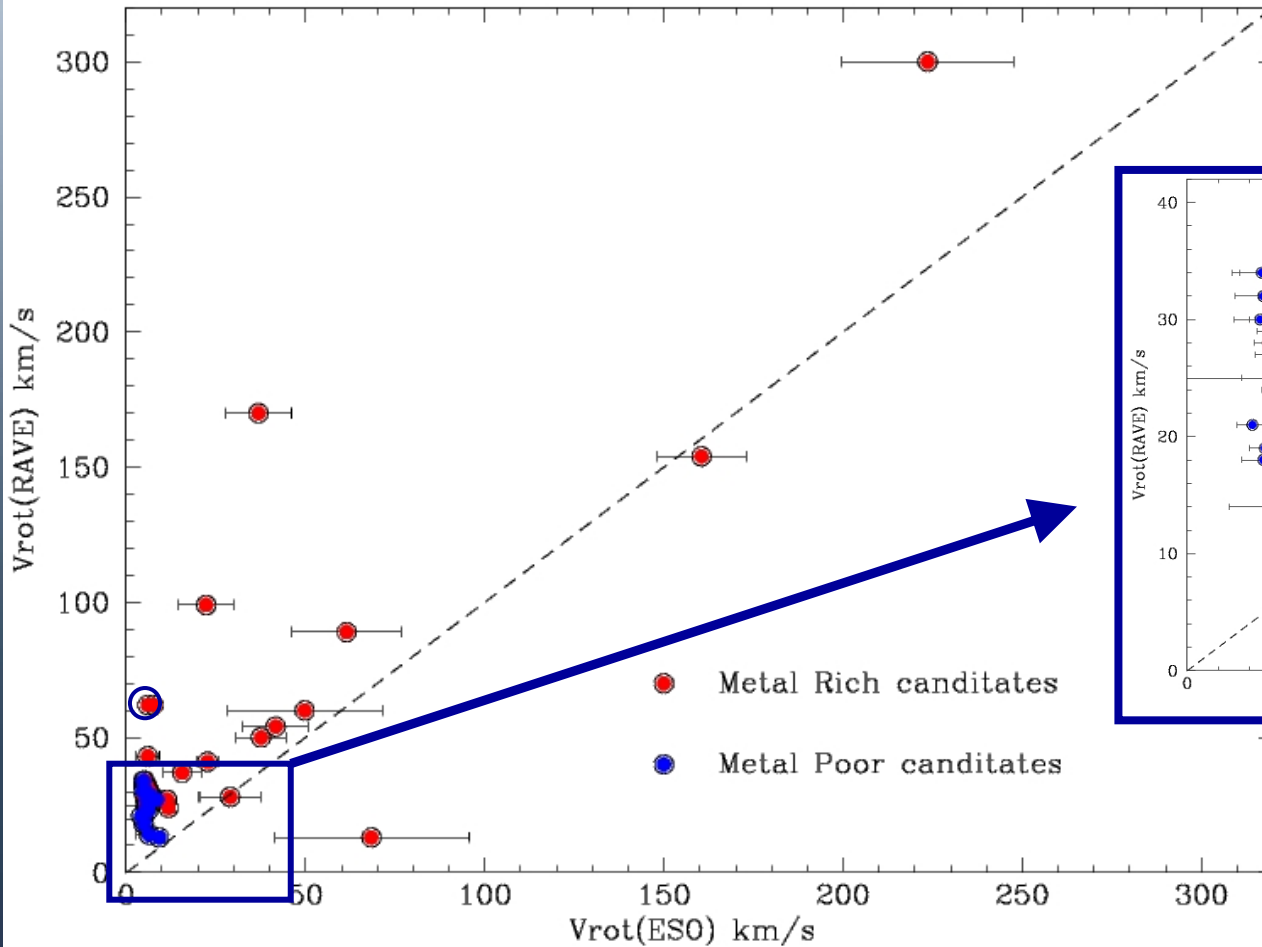
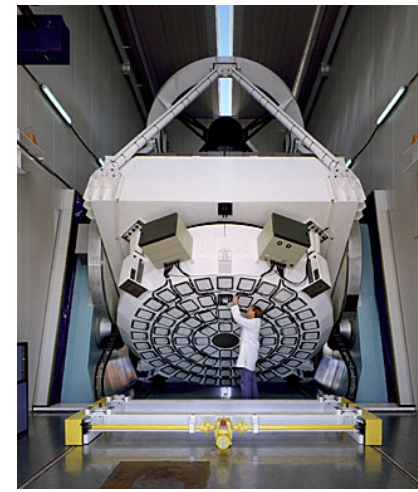
Tomaz Zwitter, Ljubljana





RAVE versus ESO, preliminary comparison

Rotational velocities





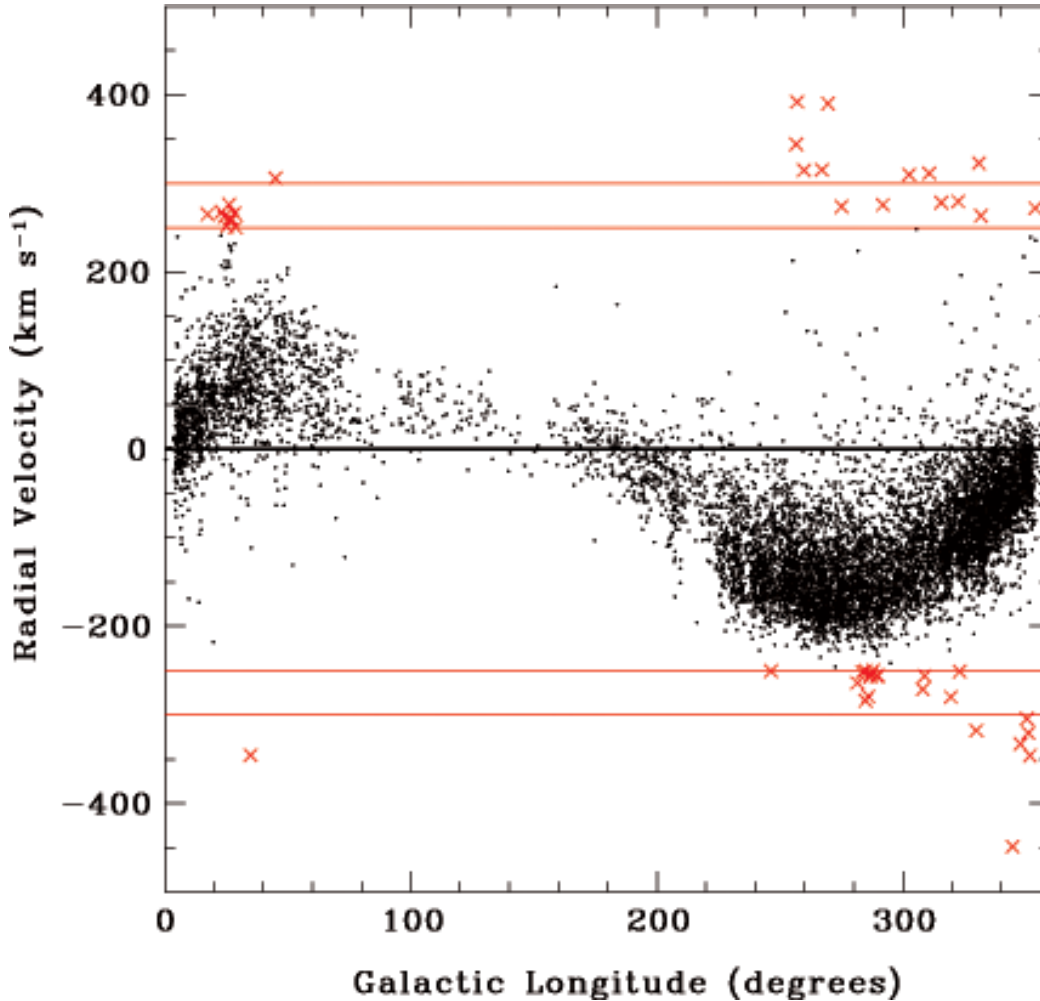
AIP



Scientific Results

The Escape Speed of the Milky-Way

Smith, Rutchi et al 2007



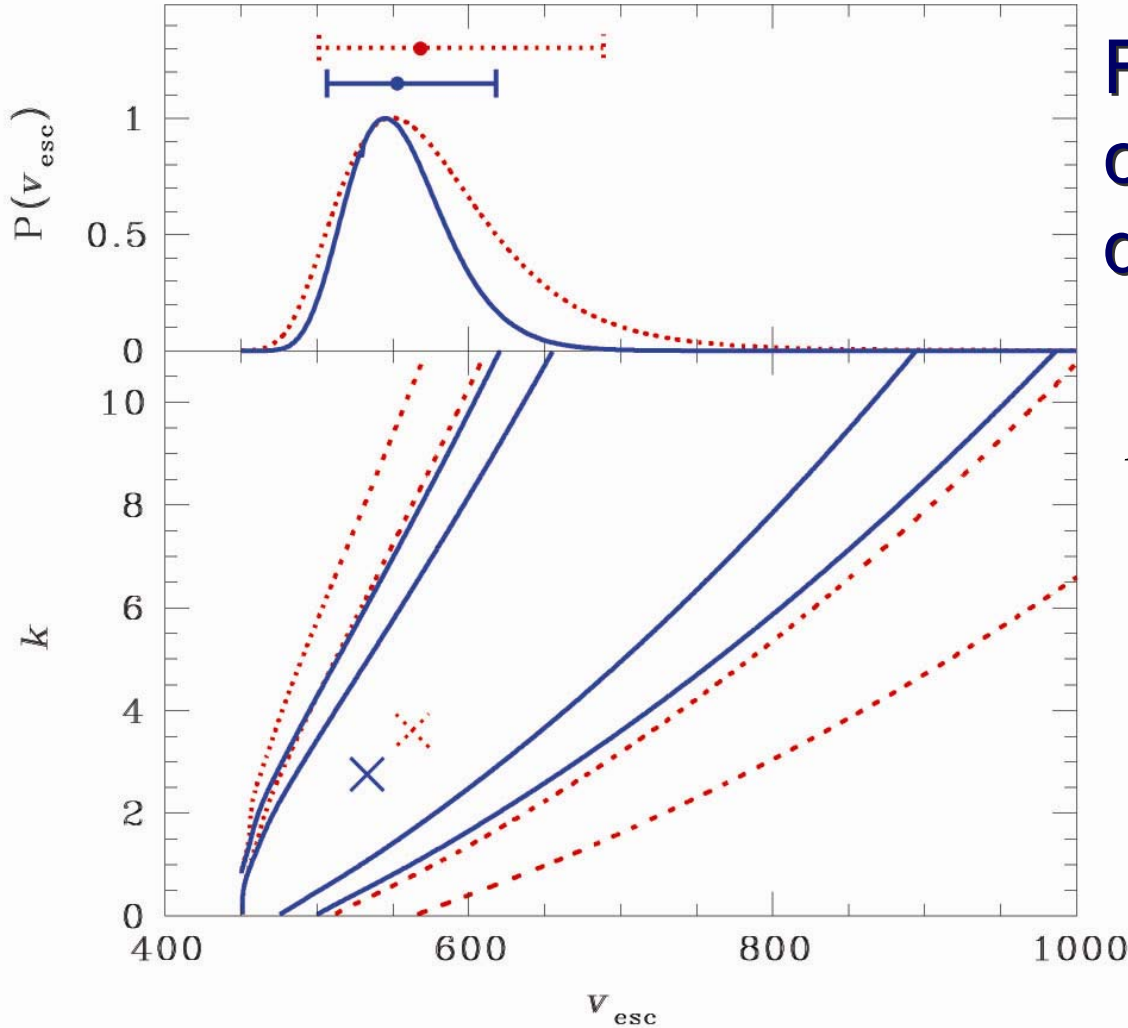
Leonard & Tremaine (1990):

near escape velocity:

$$f(\varepsilon) \propto \varepsilon^k$$

$$\varepsilon = (v_e^2 - v^2)$$

The Escape Velocity of the Milky-Way



For an adiabatically contracted NFW dark halo:

$$M_{MW} = 1.42^{+1.14}_{-0.54} \times 10^{12} M_{\odot}$$

$$v_{vir} \approx 142 \text{ km/s}$$

Smith et al
2007

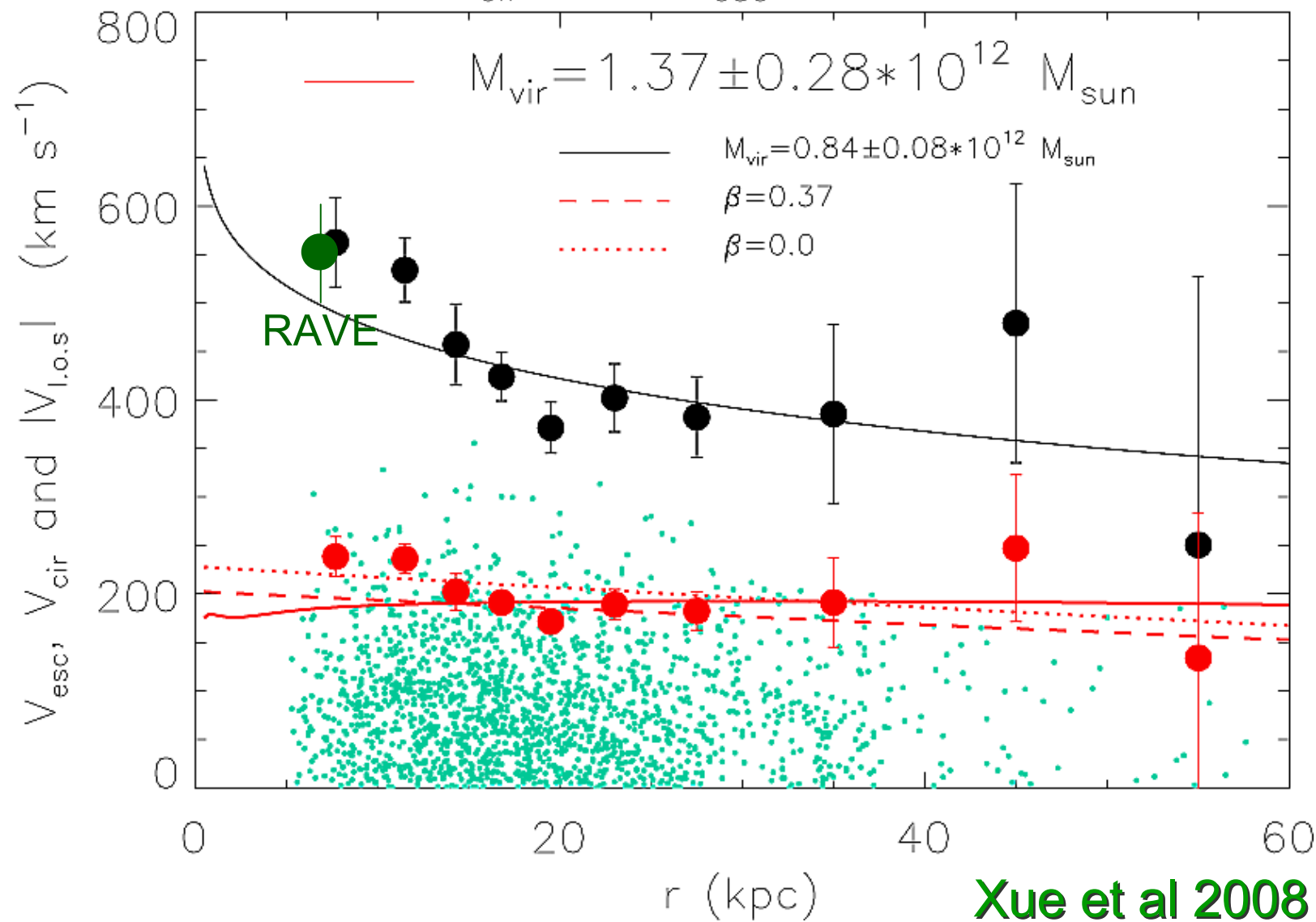
V_{circ} and V_{esc} from SDSS



AIP

Feb 27 2009 Construction and Evolution of the Galaxy

V_{cir} and V_{esc} estimate

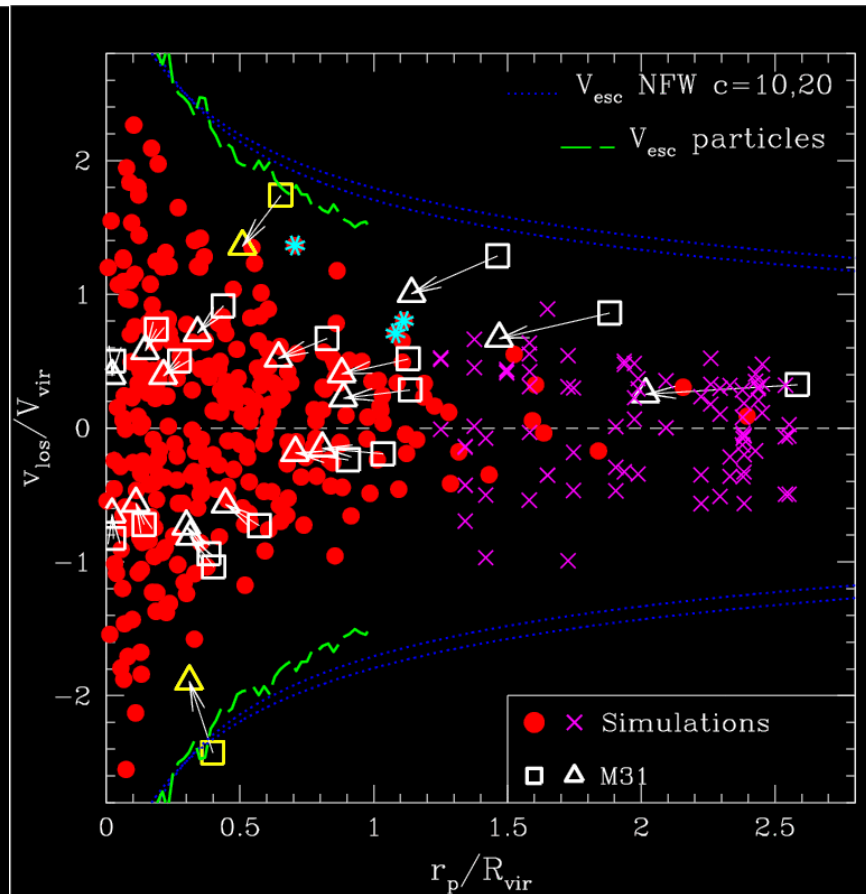
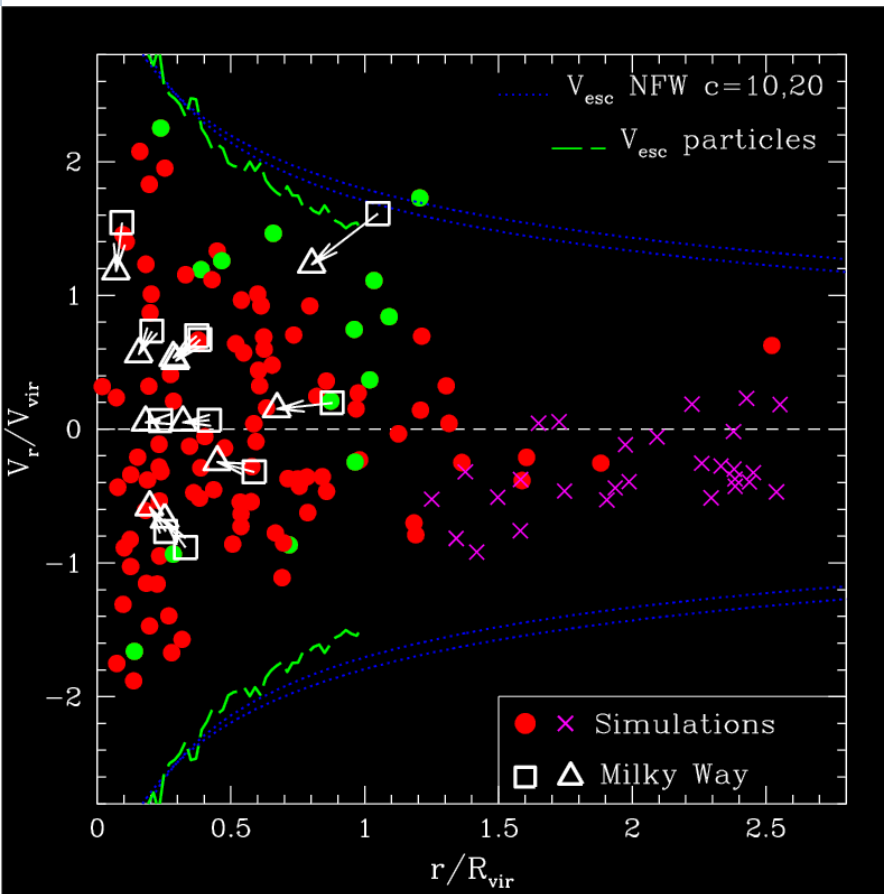


Estimating v_{vir} via satellites

AIP

Construction and Evolution of the Galaxy

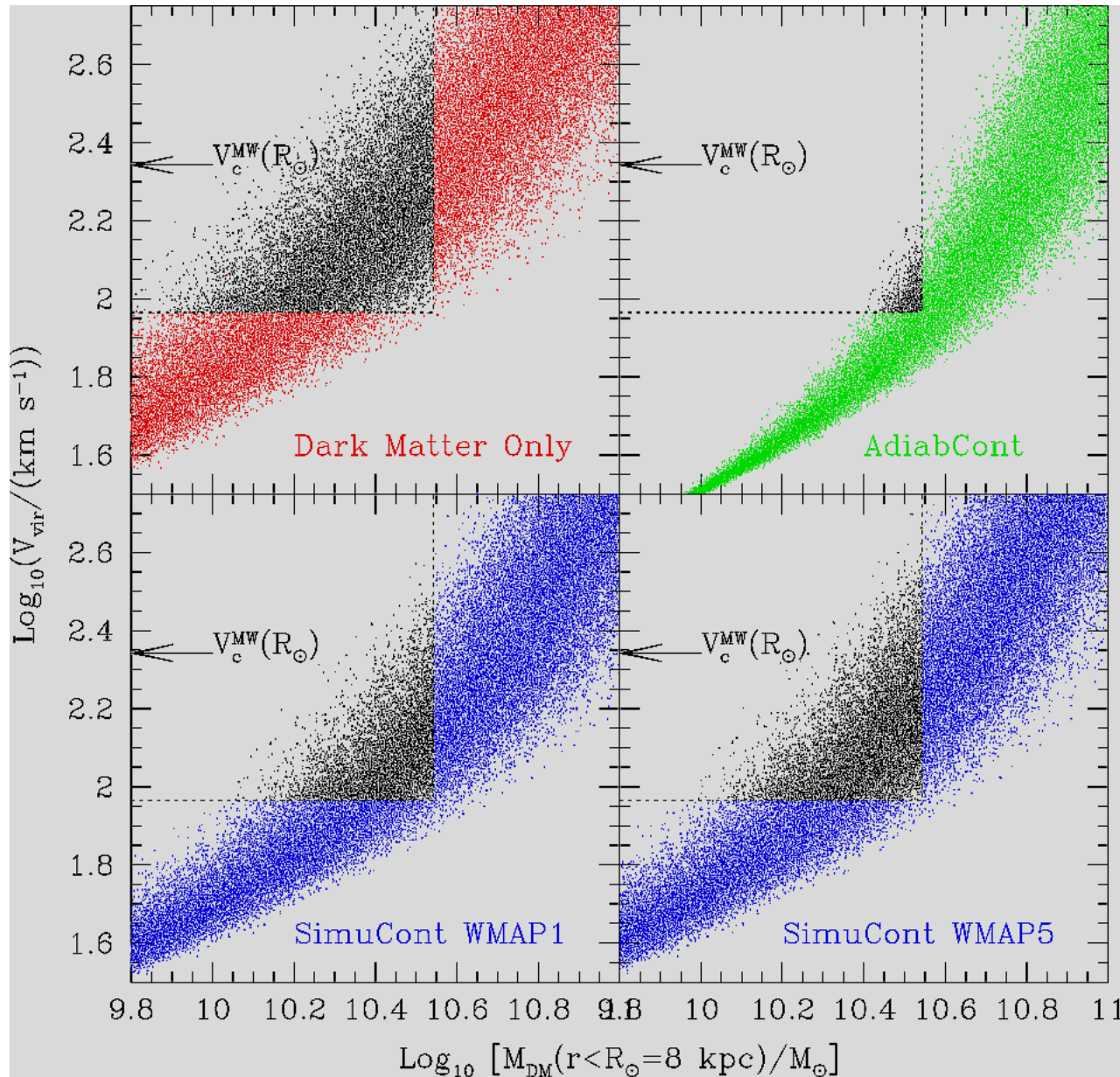
Feb 27
2009



MW

M31

Mass of the MW dark matter halo



Abadi et al
2009



What does that mean for the MW as a typical LCDM galaxy?

- $V_c = 220$ km/s (as favored by SAMs)
 - ◆ Luminosity function + TF relation
 - ◆ Only ~20% of halos suitable hosts
 - ◆ 90% of the baryons in the MW unaccounted for
 - ◆ Disk size: access to the full angular momentum reservoir
- $V_c = 140$ km/s
 - ◆ MW would be a rather untypical galaxy or over abundant

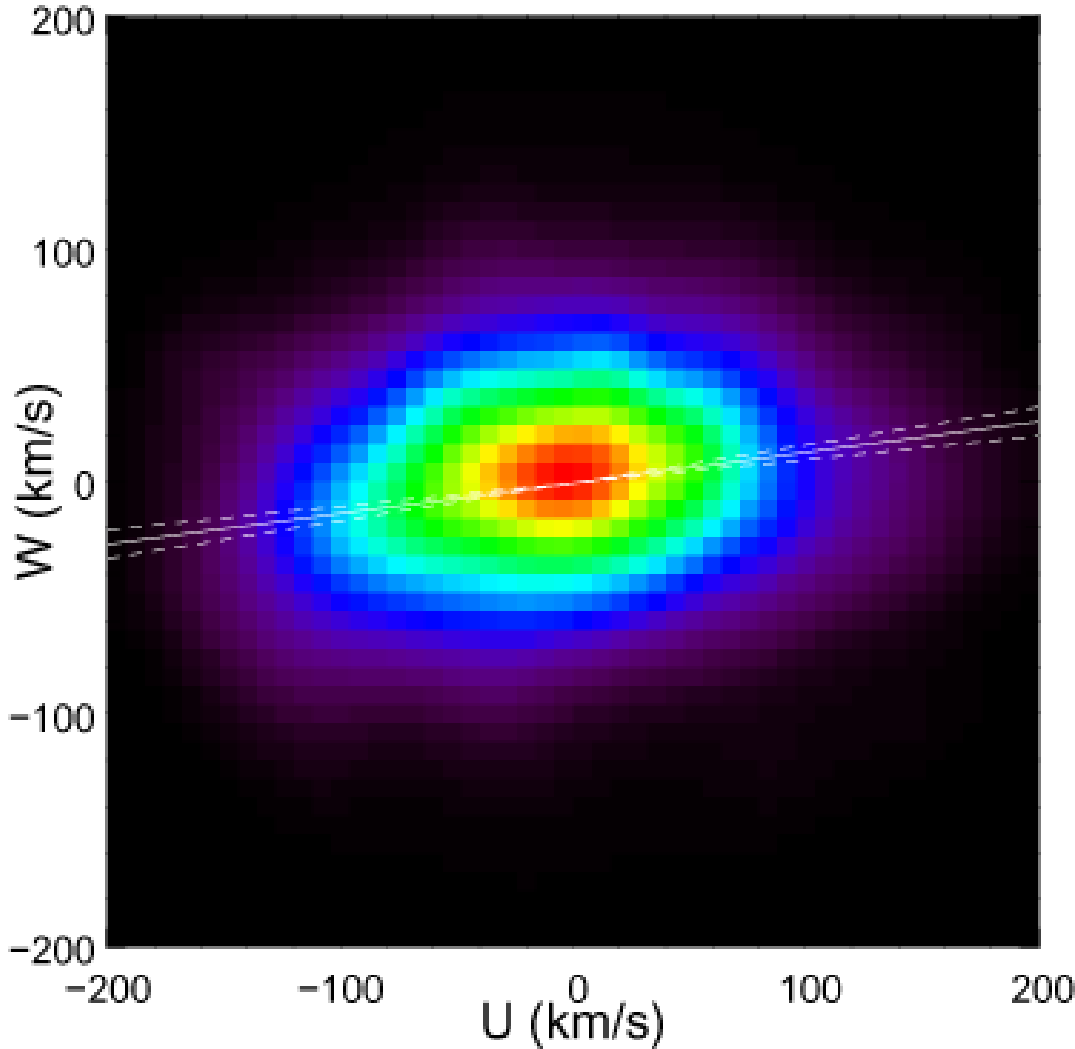


AIP

The galactic potential and the tilt of the velocity ellipsoid



AIP

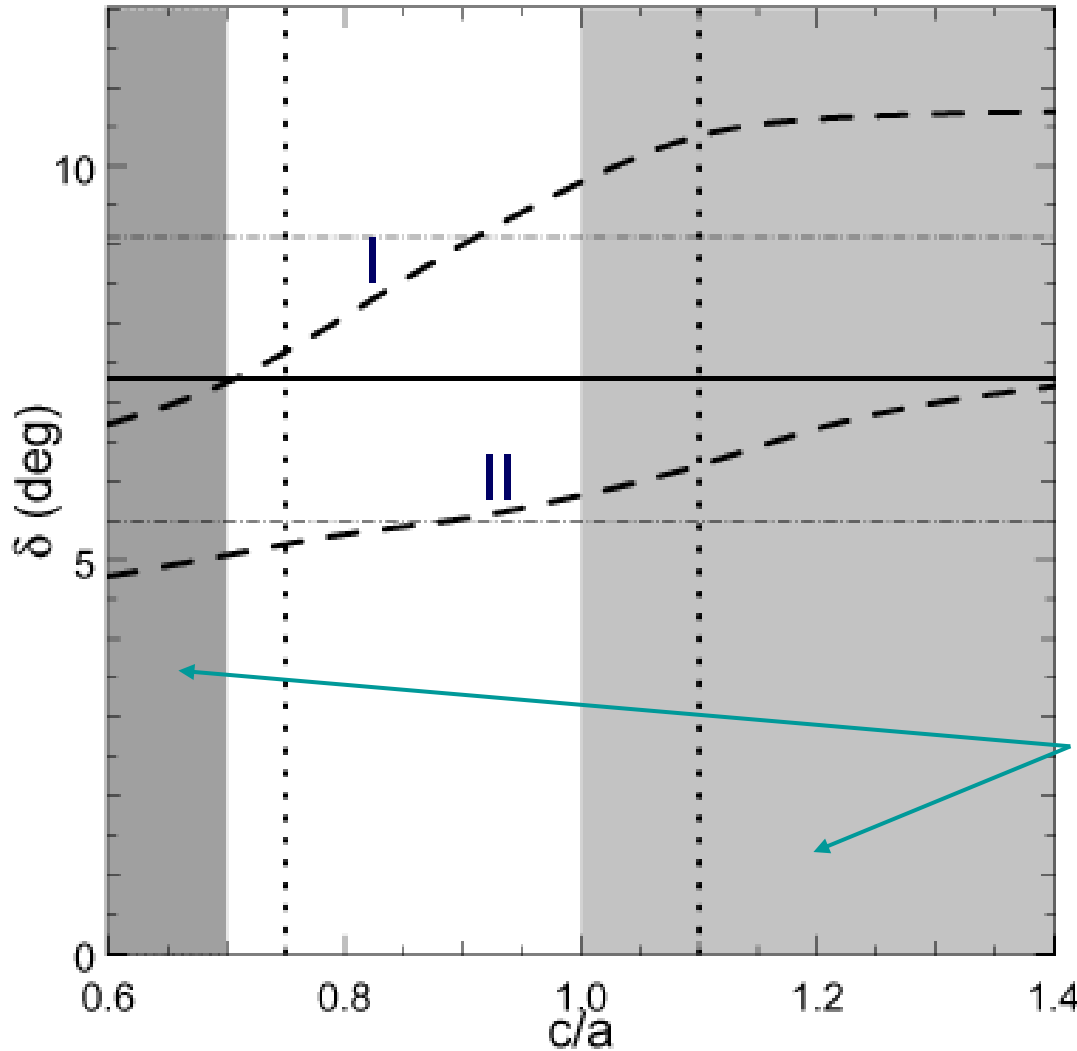


~500 KIII giants

$500 < z < 1500$ pc

$\Delta = 7.3 \pm 1.8$ deg

The galactic potential and the tilt of the velocity ellipsoid



Comparison with
Galaxy Model I & II
(Binney&Tremaine 08)

Model I: $r_D=2.0\text{kpc}$
Model II: $r_D=3.2\text{kpc}$

Constraints on Halo
flattening from
Ibata et al (2001) and
Ruzicka et al (2007)

Tidal streams in the Solar neighborhood (Seabroke et al 07)

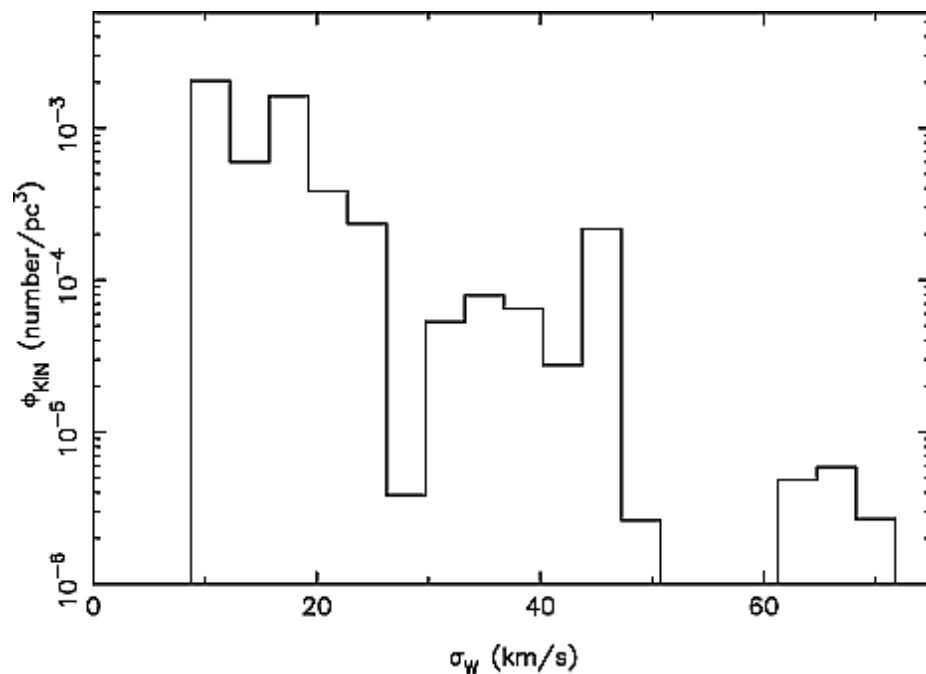
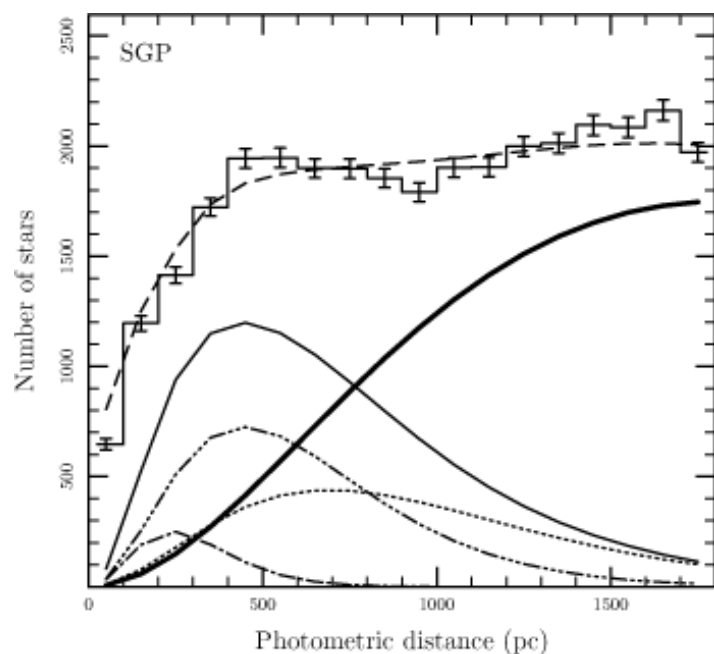


- Vertical tidal stream in solar neighborhood
 \Rightarrow coherent +W (or -W) vertical velocity
- Kuiper test to measure symmetry of vertical velocity distribution of CORAVEL and RAVE stars above and below the plane
- No sign of coherent large scale motion as would be produced e.g. by Sagittarius or the Virgo Over Density

Sample	CORAVEL		RAVE	
	Dwarfs	Giants		
Section	2.5	3.4	4.6	
V (kpc ³)	0.0003	0.0511	7.9052	
N_s (low)	200	200	300	
N_s (high)	600	800	600	
VC (%)	100	100	5	15
ρ_s (low)	0.7×10^6	4000	800	300
ρ_s (high)	2.2×10^6	16 000	1500	500
N Sgr (low)	0.1 (n)	10 (n)	80 (n)	250 (?)
N Sgr (high)	0.4 (n)	80 (n)	590 (y)	1800 (y)
N VOD	30 (n)	6000 (y)	48 000 (y)	144 000 (y)

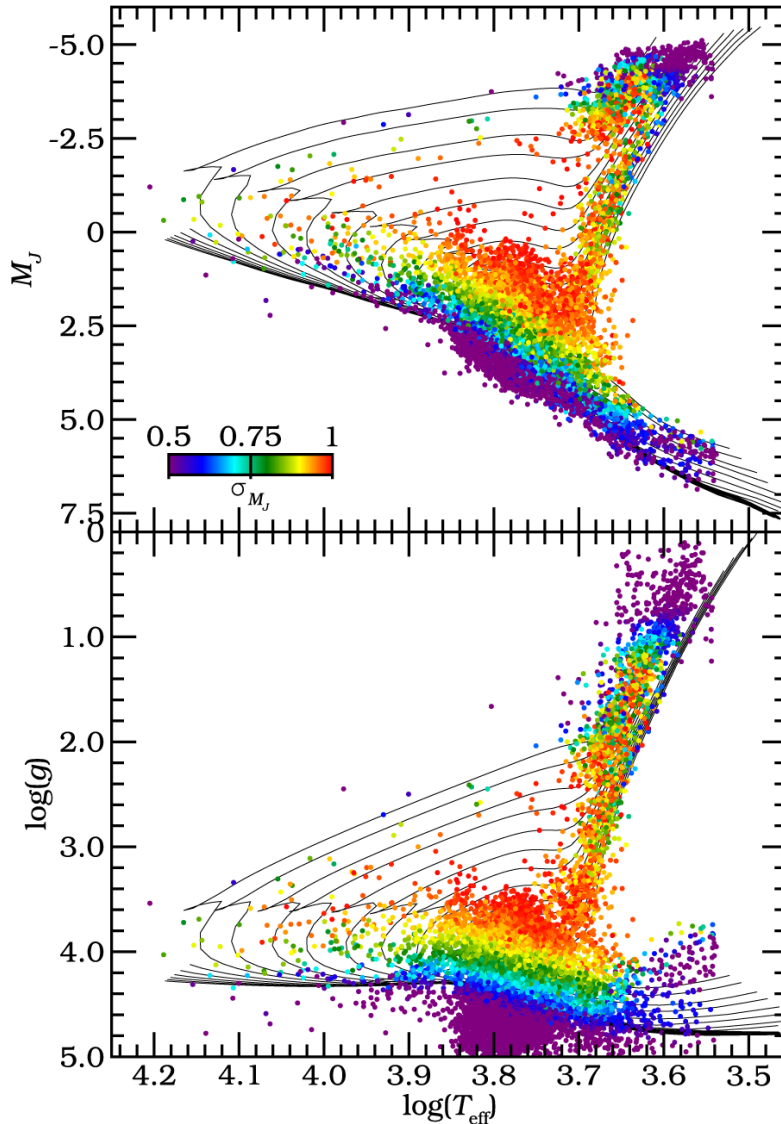
Vertical structure of the Galactic disk (Veltz et al 07)

- Simultaneously measure the vertical scale height of the galactic disk with photometric and kinematical data



- $d_{\text{thin}} = 225 \text{ pc}$, $\sigma_w < 21 \text{ km/s}$, $d_{\text{thick}} = 1048 \text{ pc}$, $\sigma_w \approx 45 \text{ km/s}$
- Inconsistent with dynamical heating
- Consistent with satellite accretion

Going 6D: Distances of RAVE stars

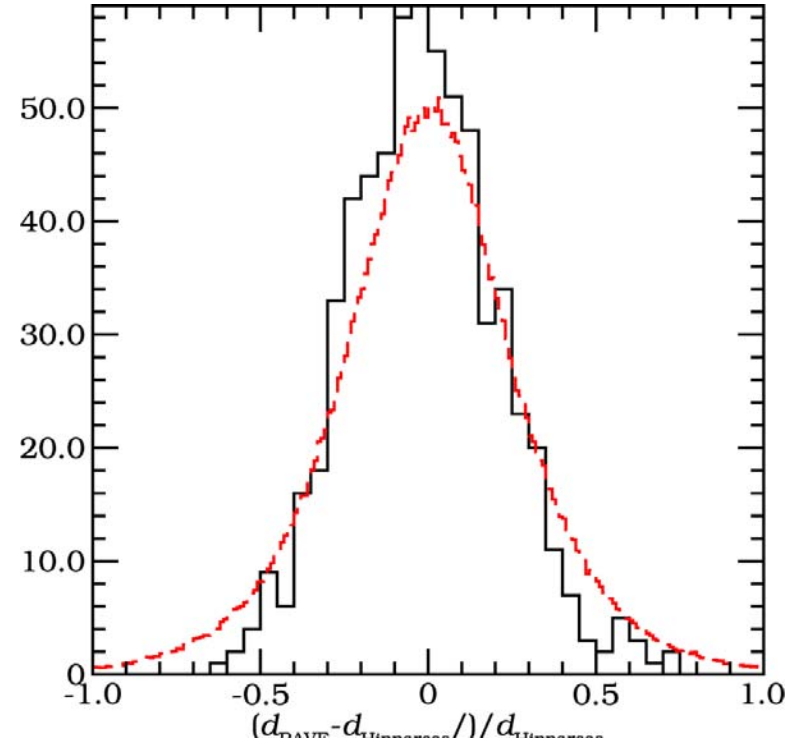
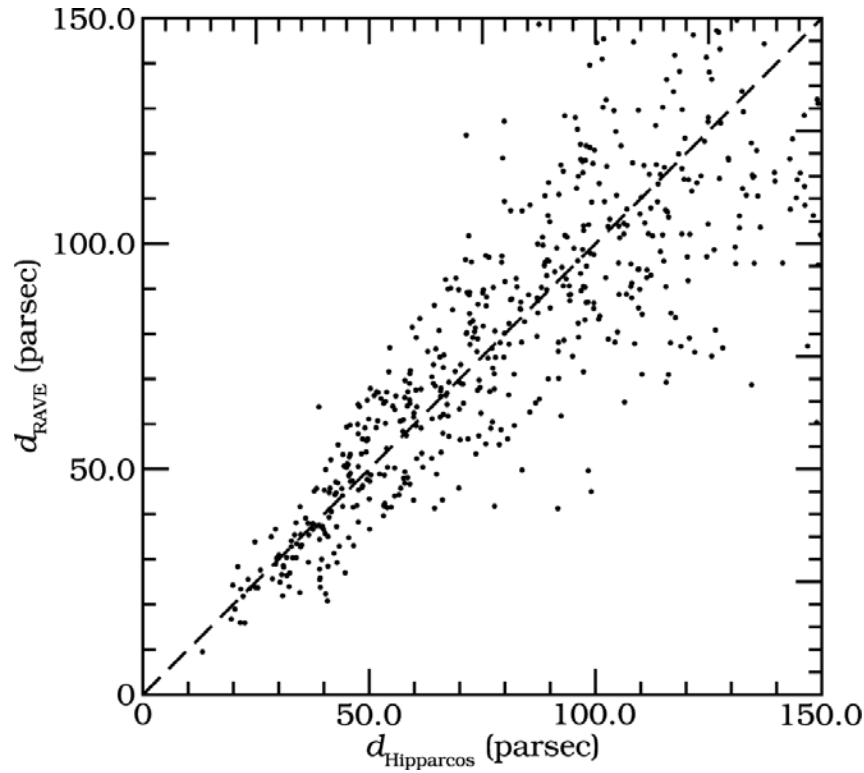


- Fit Y^2 -isochrones (Demarque et al 04) to RAVE data/deduced stellar parameters + J-K colors
 - ◆ J-Magnitude
 - ◆ Error in J-Magnitude
- Check by Monte-Carlo Sampling
- Result: out of 16663 stars in DR2
 - ◆ 2067 better 25%
 - ◆ 5294 better 37.5%
 - ◆ 12701 better 50%

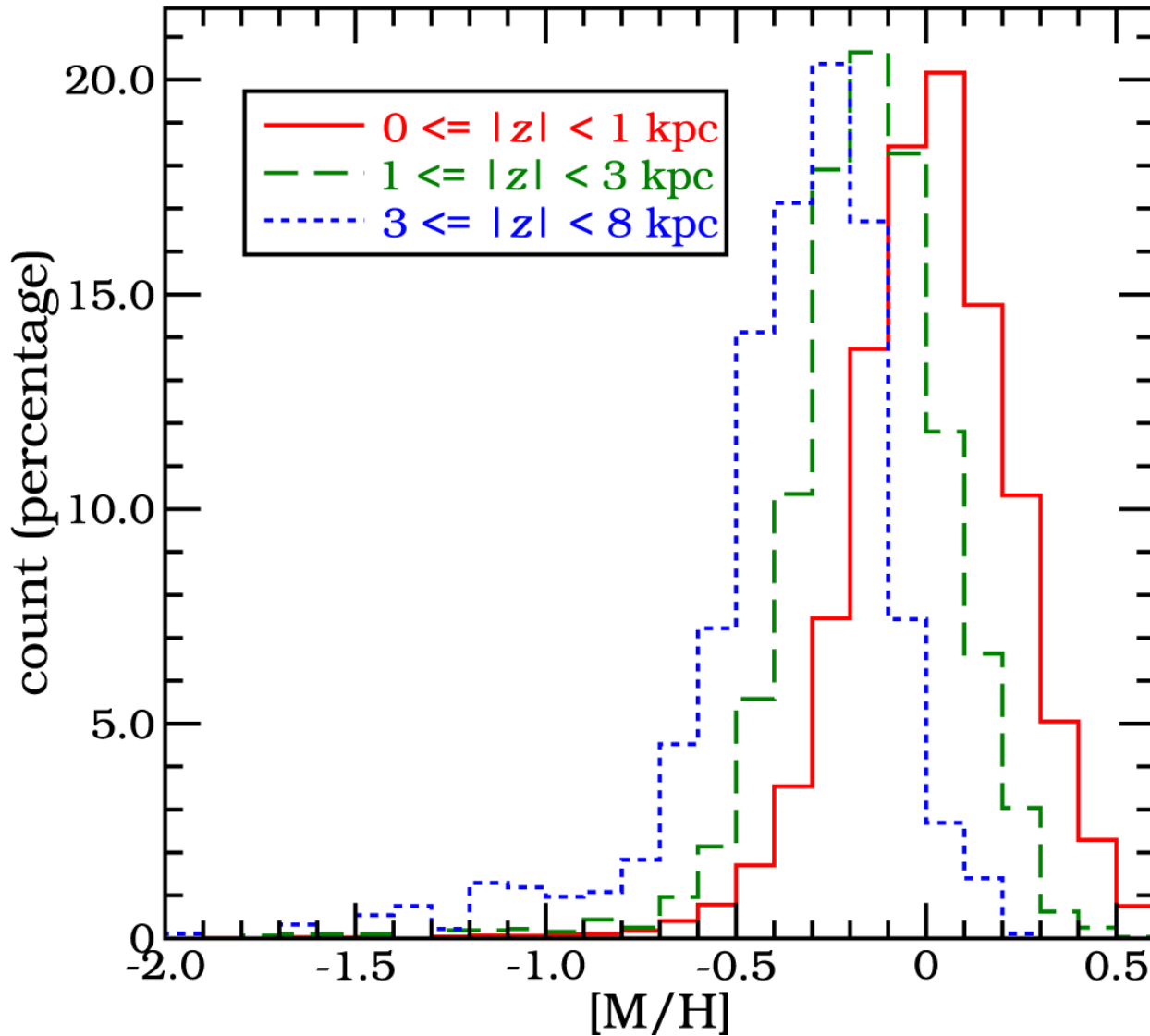


AIP

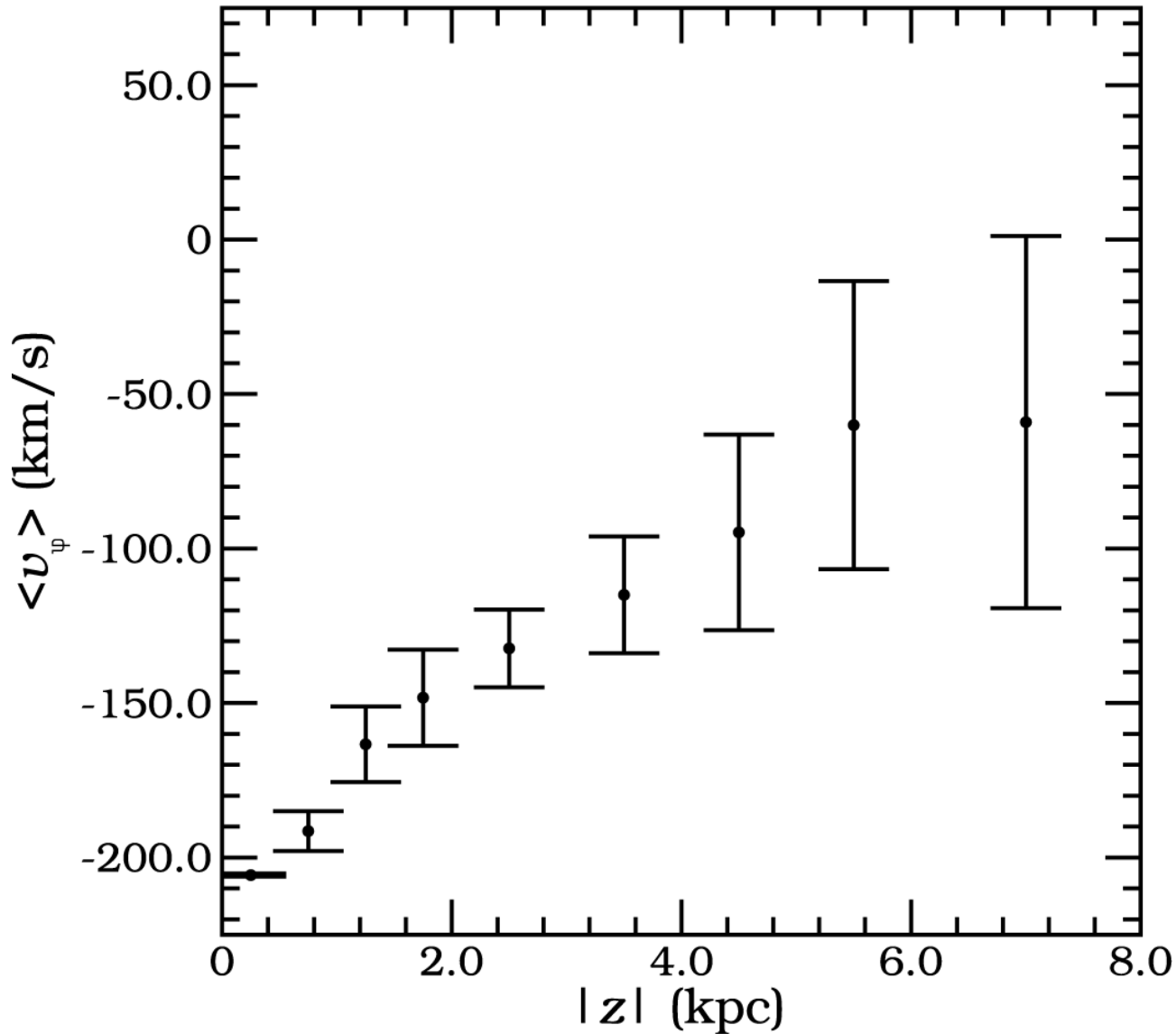
Verification for stars with Hipparcos distances



Abundances vs height



Rotation velocity vs height



**FOR THE
OR THE**

